

# Recombinant Human WRN Protein(500-946aa), His&MBP-tagged

**Cat. No.** WRN-1387H    **Lot. No.** (See product label)

## SPECIFICATION

<b>Product Overview</b>	Recombinant Human WRN Protein(Q14191)(500-946aa), fused with N-terminal MBP tag and C-terminal His tag, was expressed in E. coli.
<b>Species</b>	Human
<b>Source</b>	E.coli
<b>ProteinLength</b>	500-946aa
<b>Form</b>	If the delivery form is liquid, the default storage buffer is Tris/PBS-based buffer, 5%-50% glycerol.If the delivery form is lyophilized powder, the buffer before lyophilization is Tris/PBS-based buffer, 6% Trehalose, pH 8.0.
<b>Molecular Mass</b>	94.6 kDa
<b>AA Sequence</b>	NLGLPTKEEEEEDDENEANEGEEDDDKDFLWPAPNEEQVTCLKMYFGHSSFKPVQW KVIHSVLEERRDNVAVMATGYGKSLCFQYPPVYVGKIGLVISPLISLMEDQVLQLKMS NIPACFLGSAQSENVLTDIKLGKYRIVYVTPPEYCSGNMGLLQQLEADIGITLIIVDEAH CISEWGHDFRDSFRKLGSLKTALPMVPIVALTATASSSIREDIVRCLNLRNPQITCTGF DRPNLYLEVRRKTGNILQDLQPFLVKTSSHWEFEGPTIYCPSRKMTQQVTGELRKL NLSCGTYHAGMSFSTRKDIHHRFVRDEIQCVIATIAFGMGINKADIRQVIHYGAPKDM ESYYQEIGRAGRDLQSSCHVLWAPADINLRHLLTEIRNEKFRLYKLMMAKMEKY LHSSRCRRQIILSHFEDKQVQKASLGIMGTEKCCDNCRSRLDHC

 Tel: 1-631-559-9269    1-516-512-3133

 Email: [info@creative-biomart.com](mailto:info@creative-biomart.com)     Fax: 1-631-938-8127

 45-1 Ramsey Road, Shirley, NY 11967, USA

<b>Purity</b>	Greater than 85% as determined by SDS-PAGE.
<b>Storage</b>	Store at -20°C/-80°C upon receipt, aliquoting is necessary for mutiple use. Avoid repeated freeze-thaw cycles.
<b>Reconstitution</b>	We recommend that this vial be briefly centrifuged prior to opening to bring the contents to the bottom. Please reconstitute protein in deionized sterile water to a concentration of 0.1-1.0 mg/mL. We recommend to add 5-50% of glycerol (final concentration) and aliquot for long-term storage at -20°C/-80°C.

## GENE INFORMATION

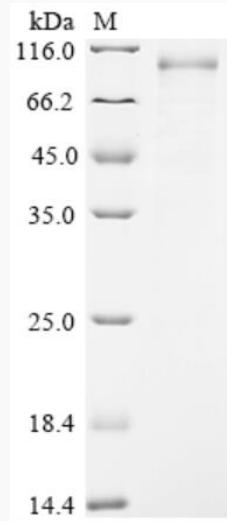
<b>Gene Name</b>	WRN Werner syndrome, RecQ helicase-like [ Homo sapiens ]
<b>Official Symbol</b>	WRN
<b>Synonyms</b>	WRN; Werner syndrome, RecQ helicase-like; Werner syndrome; Werner syndrome ATP-dependent helicase; RECQ3; RECQL2; exonuclease WRN; recQ protein-like 2; DNA helicase, RecQ-like type 3; RECQL3; DKFZp686C2056;
<b>Gene ID</b>	7486
<b>mRNA Refseq</b>	NM_000553
<b>Protein Refseq</b>	NP_000544
<b>MIM</b>	604611
<b>UniProt ID</b>	Q14191

 Tel: 1-631-559-9269 1-516-512-3133

 Email: [info@creative-biomart.com](mailto:info@creative-biomart.com)  Fax: 1-631-938-8127

 45-1 Ramsey Road, Shirley, NY 11967, USA

**SDS-PAGE**



 Tel: 1-631-559-9269 1-516-512-3133

 Email: [info@creative-biomart.com](mailto:info@creative-biomart.com)  Fax: 1-631-938-8127

 45-1 Ramsey Road, Shirley, NY 11967, USA