

Recombinant Human WSB1 Protein, Myc/DDK-tagged, C13 and N15-labeled

Cat. No. WSB1-976H **Lot. No.** (See product label)

SPECIFICATION

Product Overview

WSB1 MS Standard C13 and N15-labeled recombinant protein (NP_056441) with a C-terminal MYC/DDK tag, was expressed in HEK293 cells.

Species

Human

Source

HEK293

Description

This gene encodes a member of the WD-protein subfamily. This protein shares a high sequence identity to mouse and chick proteins. It contains several WD-repeats spanning most of the protein and an SOCS box in the C-terminus. Alternatively spliced transcript variants encoding distinct isoforms have been found for this gene.

Molecular Mass

47.4 kDa

AA Sequence

```
MASFPPRVNEKEIVRLRTIGELLAPAAPFDKCKGRENWTVAFAPDGSYFAWSQGHR
TVKLVPSWSQLQNFLLHGTKNVTNSSSLRLPRQNSDGGQKNKPREHIIDCGDIVWS
LAFGSSVPEKQSRCVNIEWHRFRFGQDQLLLATGLNNGRIKIWDVYTGKLLNLVDH
TEVVRDLTFAPDGSLLVLSASRDKTLRVWDLKDDGNMMKVLRGHQNWVYSCAFSP
DSSMLCSVGASKAVFLWNMDKYTMIRKLEGGHHHDVVACDFSPDGALLATASYDTRV
YIWDPHNGDILMEFGHLFPPPTPIFAGGANDRWVRSVSFSDGLHVASLADDKMVR
FWRIDEDYPVQVAPLSNGLCCAFSTDGSLAAGTHDGSVYFWATPRQVPSLQHLK
RMSIRRVMPQTQEVQELPIPSKLLLEFLSYRITRTRPLEQKLISEEDLAANDILDYKDDDD
KV
```

 Tel: 1-631-559-9269 1-516-512-3133

 Email: info@creative-biomart.com  Fax: 1-631-938-8127

 45-1 Ramsey Road, Shirley, NY 11967, USA

Purity	> 80% as determined by SDS-PAGE and Coomassie blue staining
Stability	Stable for 3 months from receipt of products under proper storage and handling conditions.
Storage	Store at -80 centigrade. Avoid repeated freeze-thaw cycles.
Concentration	50 µg/mL as determined by BCA
Storage Buffer	100 mM glycine, 25 mM Tris-HCl, pH 7.3.

GENE INFORMATION

Gene Name	WSB1 WD repeat and SOCS box containing 1 [Homo sapiens (human)]
Official Symbol	WSB1
Synonyms	WSB1; WD repeat and SOCS box containing 1; WD repeat and SOCS box-containing protein 1; DKFZp564A122; DKFZp564B0482; SWIP1; WD repeat and SOCS box-containing 1; SOCS box-containing WD protein SWiP-1; WSB-1;
Gene ID	26118
mRNA Refseq	NM_015626
Protein Refseq	NP_056441
MIM	610091
UniProt ID	Q9Y6I7

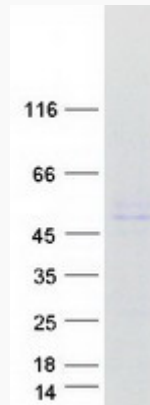
 Tel: 1-631-559-9269 1-516-512-3133

 Email: info@creative-biomart.com  Fax: 1-631-938-8127

 45-1 Ramsey Road, Shirley, NY 11967, USA



SDS-PAGE



Tel: 1-631-559-9269 1-516-512-3133

Email: info@creative-biomart.com Fax: 1-631-938-8127

45-1 Ramsey Road, Shirley, NY 11967, USA