

## Recombinant Human WT1 Protein, His-tagged

**Cat. No.** WT1-001H    **Lot. No.** (See product label)

### SPECIFICATION

<b>Product Overview</b>	Recombinant Human WT1 Protein, His-tagged, expressed in E. coli.
<b>Species</b>	Human
<b>Source</b>	E.coli
<b>ProteinLength</b>	127-249 aa
<b>Tag</b>	His
<b>Molecular Mass</b>	15 kDa
<b>AA Sequence</b>	MFPNAPYLPSCLESQPAIRNQGYSTVTFDGTSPSYGHTPSHHAAQFPNHSEFKHEDPM GQQGSLGEQQYSVPPPVIYGCHTPTDCTGSQALLLRTPYSSDNLQMTSQLECMT WNQMNLGATLKGHHHHHHHHH
<b>Purity</b>	>90% by SDS-PAGE
<b>Storage</b>	Store it under sterile conditions at -20 to -80 °C. It is recommended that the protein be aliquoted for optimal storage. Avoid repeated freeze-thaw cycles.
<b>Concentration</b>	1mg/ml by BCA
<b>Storage Buffer</b>	Sterile PBS, pH7.4, 10% Glycerol, 8% Trehalose

 Tel: 1-631-559-9269    1-516-512-3133

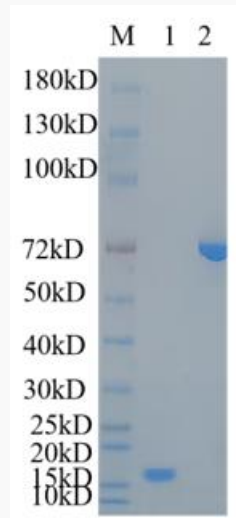
 Email: [info@creative-biomart.com](mailto:info@creative-biomart.com)     Fax: 1-631-938-8127

 45-1 Ramsey Road, Shirley, NY 11967, USA

## GENE INFORMATION

<b>Gene Name</b>	WT1 WT1 transcription factor [ Homo sapiens (human) ]
<b>Official Symbol</b>	WT1
<b>Synonyms</b>	GUD; AWT1; WAGR; WT-1; WT33; NPHS4; WIT-2; WT1
<b>Gene ID</b>	7490
<b>MIM</b>	607102
<b>UniProt ID</b>	P19544

Reducing 4%-20%  
SDS-PAGE (CBB  
stained) analysis  
profiles of purified  
WT1-001H



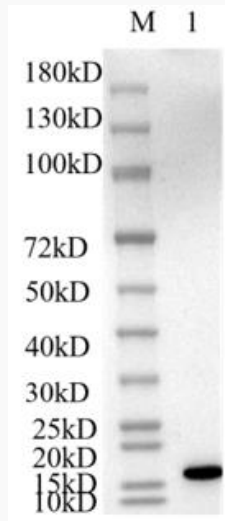
1. WT1-001H  
2. BSA

Tel: 1-631-559-9269 1-516-512-3133

Email: [info@creative-biomart.com](mailto:info@creative-biomart.com) Fax: 1-631-938-8127

45-1 Ramsey Road, Shirley, NY 11967, USA

**WB (Anti-His Mouse  
Monoclonal  
antibody) analysis  
profiles of purified  
WT1-001H**



WB

 Tel: 1-631-559-9269 1-516-512-3133

 Email: [info@creative-biomart.com](mailto:info@creative-biomart.com)  Fax: 1-631-938-8127

 45-1 Ramsey Road, Shirley, NY 11967, USA