

Recombinant Full Length Human WT1 Protein, N-His-tagged

Cat. No. WT1-07HFL Lot. No. (See product label)

SPECIFICATION

Product Overview	Recombinant Full Length Human WT1 Protein, fused to His-tag at N-terminus, was expressed in E. coli.
Species	Human
Source	E.coli
Description	<p>This gene encodes a transcription factor that contains four zinc-finger motifs at the C-terminus and a proline/glutamine-rich DNA-binding domain at the N-terminus. It has an essential role in the normal development of the urogenital system, and it is mutated in a small subset of patients with Wilms tumor. This gene exhibits complex tissue-specific and polymorphic imprinting pattern, with biallelic, and monoallelic expression from the maternal and paternal alleles in different tissues. Multiple transcript variants have been described. In several variants, there is evidence for the use of a non-AUG (CUG) translation initiation codon upstream of, and in-frame with the first AUG. Authors of PMID:7926762 also provide evidence that WT1 mRNA undergoes RNA editing in human and rat, and that this process is tissue-restricted and developmentally regulated.</p>
Form	25mM Tris, pH8.0, 150 mM NaCl, 10% glycerol, 1% Sarkosyl.
Molecular Mass	55.8 kDa
AA Sequence	A DNA sequence encoding human full-length WT1.

 Tel: 1-631-559-9269 1-516-512-3133

 Email: info@creative-biomart.com  Fax: 1-631-938-8127

 45-1 Ramsey Road, Shirley, NY 11967, USA

Purity	> 80% as determined by SDS-PAGE and Coomassie blue staining.
Stability	Stable for 12 months from the date of receipt of the product under proper storage and handling conditions. Avoid repeated freeze-thaw cycles.
Storage	Store at -80 centigrade.
Concentration	>50 ug/mL as determined by microplate BCA method.
Protein Families	Druggable Genome, Transcription Factors
Full Length	Full L.

GENE INFORMATION

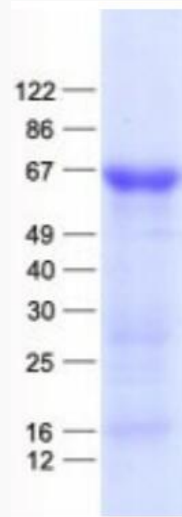
Gene Name	WT1 WT1 transcription factor [Homo sapiens (human)]
Official Symbol	WT1
Synonyms	AWT1; EWS-WT1; GUD; NPHS4; WAGR; WIT-2; WT33
Gene ID	7490
mRNA Refseq	NM_024424.5
Protein Refseq	NP_077742.3
MIM	607102
UniProt ID	P19544

 Tel: 1-631-559-9269 1-516-512-3133

 Email: info@creative-biomart.com  Fax: 1-631-938-8127

 45-1 Ramsey Road, Shirley, NY 11967, USA

SDS-PAGE



 Tel: 1-631-559-9269 1-516-512-3133

 Email: info@creative-biomart.com  Fax: 1-631-938-8127

 45-1 Ramsey Road, Shirley, NY 11967, USA