

Recombinant Human WT1 protein, His & GST-tagged

Cat. No. WT1-1402H Lot. No. (See product label)

SPECIFICATION

Product Overview Recombinant Human WT1 aa. (Leu310~Leu449 fused with N-terminal His & GST tag was produced in E. coli cells.

Species Human

Source E.coli

ProteinLength Leu310~Leu449

Description

This gene encodes a transcription factor that contains four zinc-finger motifs at the C-terminus and a proline/glutamine-rich DNA-binding domain at the N-terminus. It has an essential role in the normal development of the urogenital system, and it is mutated in a small subset of patients with Wilms tumor. This gene exhibits complex tissue-specific and polymorphic imprinting pattern, with biallelic, and monoallelic expression from the maternal and paternal alleles in different tissues. Multiple transcript variants have been described. In several variants, there is evidence for the use of a non-AUG (CUG) translation initiation codon upstream of, and in-frame with the first AUG. Authors of PMID:7926762 also provide evidence that WT1 mRNA undergoes RNA editing in human and rat, and that this process is tissue-restricted and developmentally regulated.

Form Freeze-dried powder

Molecular Mass 47kDa as determined by SDS-PAGE reducing conditions.

 Tel: 1-631-559-9269 1-516-512-3133

 Email: info@creative-biomart.com  Fax: 1-631-938-8127

 45-1 Ramsey Road, Shirley, NY 11967, USA

Endotoxin	<1.0EU per 1g (determined by the LAL method)
Purity	>90%
Characteristic	The isoelectric point is 10.3.
Applications	Positive Control; Immunogen; SDS-PAGE; WB.
Stability	The thermal stability is described by the loss rate. The loss rate was determined by accelerated thermal degradation test, that is, incubate the protein at 37°C for 48h, and no obvious degradation and precipitation were observed. The loss rate is less than 5% within the expiration date under appropriate storage condition.
Storage	Avoid repeated freeze/thaw cycles. Store at 2-8°C for one month. Aliquot and store at -80°C for 12 months.
Concentration	200µg/mL
Storage buffer	100mM NaHCO ₃ , 500mM NaCl, pH8.3, containing 1mM EDTA, 1mM DTT, 0.01% sarcosyl, 5% Trehalose and Proclin300.
Reconstitution	Reconstitute in 100mM NaHCO ₃ , 500mM NaCl (pH8.3) to a concentration of 0.1-1.0 mg/mL. Do not vortex.

GENE INFORMATION

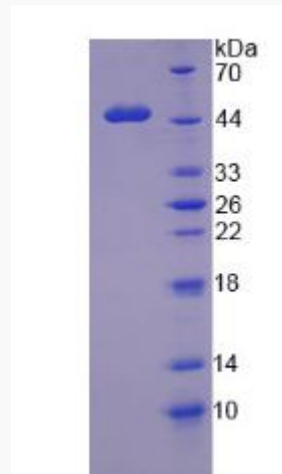
Gene Name	WT1 Wilms tumor 1 [Homo sapiens (human)]
Official Symbol	WT1
Synonyms	WT1; Wilms tumor 1; GUD; AWT1; WAGR; WT33; NPHS4; WIT-2; EWS-WT1; Wilms

 Tel: 1-631-559-9269 1-516-512-3133

 Email: info@creative-biomart.com  Fax: 1-631-938-8127

 45-1 Ramsey Road, Shirley, NY 11967, USA

tumor protein; Wilms tumor protein isoform Ex4a(+)

Gene ID 7490**mRNA Refseq** NM_000378.4**Protein Refseq** NP_000369.3**UniProt ID** P19544**SDS-PAGE** Tel: 1-631-559-9269 1-516-512-3133 Email: info@creative-biomart.com  Fax: 1-631-938-8127 45-1 Ramsey Road, Shirley, NY 11967, USA