

## Recombinant Human WT1 protein, His-tagged

Cat. No. WT1-17H Lot. No. (See product label)

### SPECIFICATION

<b>Product Overview</b>	Recombinant Human WT1(Leu310~Leu449) fused with His tag at N-terminal was expressed in E. coli.
<b>Species</b>	Human
<b>Source</b>	E.coli
<b>ProteinLength</b>	Leu310~Leu449
<b>Description</b>	This gene encodes a transcription factor that contains four zinc-finger motifs at the C-terminus and a proline/glutamine-rich DNA-binding domain at the N-terminus. It has an essential role in the normal development of the urogenital system, and it is mutated in a small subset of patients with Wilms tumor. This gene exhibits complex tissue-specific and polymorphic imprinting pattern, with biallelic, and monoallelic expression from the maternal and paternal alleles in different tissues. Multiple transcript variants have been described. In several variants, there is evidence for the use of a non-AUG (CUG) translation initiation codon upstream of, and in-frame with the first AUG. Authors of PMID:7926762 also provide evidence that WT1 mRNA undergoes RNA editing in human and rat, and that this process is tissue-restricted and developmentally regulated.
<b>Form</b>	PBS, pH7.4, containing 0.01% SKL, 1mM DTT, 5% Trehalose and Proclin300
<b>Molecular Mass</b>	46.5kDa

 Tel: 1-631-559-9269 1-516-512-3133

 Email: [info@creative-biomart.com](mailto:info@creative-biomart.com)  Fax: 1-631-938-8127

 45-1 Ramsey Road, Shirley, NY 11967, USA

<b>Endotoxin</b>	<1.0EU per 1g (determined by the LAL method)
<b>Purity</b>	> 90%
<b>Applications</b>	Positive Control; Immunogen; SDS-PAGE; WB. If bio-activity of the protein is needed, please check active protein
<b>Stability</b>	The thermal stability is described by the loss rate. The loss rate was determined by accelerated thermal degradation test, that is, incubate the protein at 37 centigrade for 48h, and no obvious degradation and precipitation were observed. The loss rate is less than 5% within the expiration date under appropriate storage condition.
<b>Storage</b>	Avoid repeated freeze/thaw cycles. Store at 2-8 centigrade for one month. Aliquot and store at -80 centigrade for 12 months.
<b>Reconstitution</b>	Reconstitute in PBS or others.

## GENE INFORMATION

<b>Gene Name</b>	WT1 Wilms tumor 1 [ Homo sapiens ]
<b>Official Symbol</b>	WT1
<b>Synonyms</b>	WT1; Wilms tumor 1; GUD; Wilms tumor protein; AWT1; WAGR; WIT 2; amino-terminal domain of EWS last three zinc fingers of the DNA-binding domain of WT1; WT33; NPHS4; WIT-2; EWS-WT1;
<b>Gene ID</b>	7490
<b>mRNA Refseq</b>	NM_000378

 Tel: 1-631-559-9269 1-516-512-3133

 Email: [info@creative-biomart.com](mailto:info@creative-biomart.com)  Fax: 1-631-938-8127

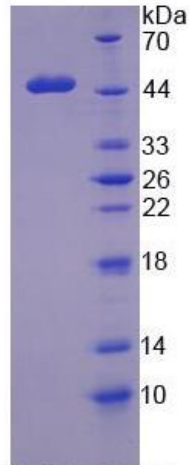
 45-1 Ramsey Road, Shirley, NY 11967, USA

<b>Protein Refseq</b>	NP_000369
<b>MIM</b>	607102
<b>UniProt ID</b>	P19544
<b>Chromosome Location</b>	11p13
<b>Pathway</b>	Regulation of Telomerase, organism-specific biosystem; Transcriptional misregulation in cancer, organism-specific biosystem; Transcriptional misregulation in cancer, conserved biosystem;
<b>Function</b>	C2H2 zinc finger domain binding; RNA binding; RNA polymerase II core promoter proximal region sequence-specific DNA binding transcription factor activity involved in positive regulation of transcription; double-stranded DNA binding; metal ion binding; protein binding; sequence-specific DNA binding; sequence-specific DNA binding transcription factor activity; sequence-specific DNA binding transcription factor activity; transcription regulatory region DNA binding; zinc ion binding;

 Tel: 1-631-559-9269 1-516-512-3133

 Email: [info@creative-biomart.com](mailto:info@creative-biomart.com)  Fax: 1-631-938-8127

 45-1 Ramsey Road, Shirley, NY 11967, USA



15% SDS-PAGE

Tel: 1-631-559-9269 1-516-512-3133

Email: [info@creative-biomart.com](mailto:info@creative-biomart.com) Fax: 1-631-938-8127

45-1 Ramsey Road, Shirley, NY 11967, USA