

Recombinant Human WT1 Protein (1-449 aa), His-tagged

Cat. No. WT1-1861H **Lot. No.** (See product label)

SPECIFICATION

Product Overview	Recombinant Human WT1 Protein (1-449 aa) is produced by Yeast expression system. This protein is fused with a 6xHis tag at the N-terminal. Research Area: Cancer. Protein Description: Full Length.
Species	Human
Source	Yeast
ProteinLength	1-449 aa
Description	Transcription factor that plays an important role in cellular development and cell survival. Regulates the expression of numerous target genes, including EPO. Plays an essential role for development of the urogenital system. Recognizes and binds to the DNA sequence 5'-CGCCCCCGC-3'. It has a tumor suppressor as well as an oncogenic role in tumor formation. Function may be isoform-specific: isoforms lacking the KTS motif may act as transcription factors. Isoforms containing the KTS motif may bind mRNA and play a role in mRNA metabolism or splicing. Isoform 1 has lower affinity for DNA, and can bind RNA.
Form	Tris-based buffer,50% glycerol
Molecular Mass	51.2 kDa
AA Sequence	MGSDVRDLNALLPAVPSLGGGGGCALPVSGAAQWAPVLDFAPPGASAYGSLGGPA PPPAPPPPPPPPHSFIKQEPSWGGAEPHEEQCLSAFTVHFSGQFTGTAGACRYG

 Tel: 1-631-559-9269 1-516-512-3133

 Email: info@creative-biomart.com  Fax: 1-631-938-8127

 45-1 Ramsey Road, Shirley, NY 11967, USA

PFGPPPPSQASSGQARMFPNAPYLPSCLE SQPAIRNQQGYSTVTFDGTSPSYGHTPSH
 HAAQFPNHSFKHEDPMGQQGSLGEQQYSVPPPVYGCHTPTDSC TGSQALLLRTPY
 SSDNLYQMTSQLECM TWNQMNLGATLKGVAAGSSSSSVKWTEGQSNHSTGYESDN
 HTTPILCGAQYRIHTHG VFRGIQDVRRVPGVAPTLVRSASETSEKRPFMCAYPGCNK
 RYFKLSHLQMHSRKHTGEKPYQCDFKDCERRFSRSDQLKRHRRTHTGVKPFQCKT
 CQRKFSRSDHLKTHTRTHTGKTSEKPFSCRWPSCQKKFARSDELVRHHNMHQRN
 MTKLQLAL

Purity > 90% as determined by SDS-PAGE.

Notes Repeated freezing and thawing is not recommended. Store working aliquots at 4 centigrade for up to one week.

Storage The shelf life is related to many factors, storage state, buffer ingredients, storage temperature and the stability of the protein itself. Generally, the shelf life of liquid form is 6 months at -20 centigrade/-80 centigrade. The shelf life of lyophilized form is 12 months at -20 centigrade/-80 centigrade.

Concentration A hardcopy of COA with reconstitution instruction is sent along with the products.

GENE INFORMATION

Gene Name [WT1 Wilms tumor 1 \[Homo sapiens \]](#)

Official Symbol [WT1](#)

Synonyms WT1; Wilms tumor 1; GUD; Wilms tumor protein; AWT1; WAGR; WIT 2; WT33; NPHS4; WIT-2; EWS-WT1;

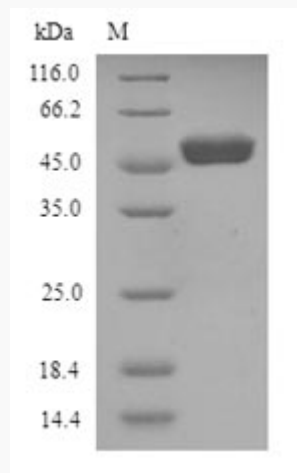
Gene ID [7490](#)

 Tel: 1-631-559-9269 1-516-512-3133

 Email: info@creative-biomart.com  Fax: 1-631-938-8127

 45-1 Ramsey Road, Shirley, NY 11967, USA

mRNA Refseq	NM_000378
Protein Refseq	NP_000369
MIM	607102
UniProt ID	P19544



(Tris-Glycine gel) Discontinuous SDS-PAGE (reduced) with 5% enrichment gel and 15% separation gel.

 Tel: 1-631-559-9269 1-516-512-3133

 Email: info@creative-biomart.com  Fax: 1-631-938-8127

 45-1 Ramsey Road, Shirley, NY 11967, USA