

## Recombinant Human WT1 protein, His-tagged

**Cat. No.** WT1-5272H    **Lot. No.** (See product label)

### SPECIFICATION

<b>Product Overview</b>	Recombinant Human WT1 protein(P19544)(1-299aa), fused to N-terminal His tag, was expressed in E. coli.
<b>Species</b>	Human
<b>Source</b>	E.coli
<b>ProteinLength</b>	1-299aa
<b>Form</b>	If the delivery form is liquid, the default storage buffer is Tris/PBS-based buffer, 5%-50% glycerol. If the delivery form is lyophilized powder, the buffer before lyophilization is Tris/PBS-based buffer, 6% Trehalose, pH 8.0.
<b>Molecular Mass</b>	38.2 kDa
<b>Purity</b>	Greater than 90% as determined by SDS-PAGE.
<b>Storage</b>	Store at -20°C/-80°C upon receipt, aliquoting is necessary for mutiple use. Avoid repeated freeze-thaw cycles.
<b>Reconstitution</b>	Please reconstitute protein in deionized sterile water to a concentration of 0.1-1.0 mg/mL. We recommend to add 5-50% of glycerol (final concentration) and aliquot for long-term storage at -20°C/-80°C. Our default final concentration of glycerol is 50%.

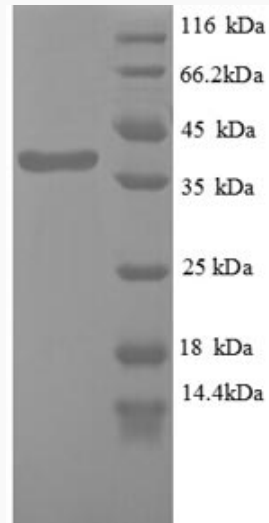
 Tel: 1-631-559-9269    1-516-512-3133

 Email: [info@creative-biomart.com](mailto:info@creative-biomart.com)     Fax: 1-631-938-8127

 45-1 Ramsey Road, Shirley, NY 11967, USA

**GENE INFORMATION****Gene Name** [WT1 Wilms tumor 1 \[ Homo sapiens \]](#)**Official Symbol** [WT1](#)**Synonyms** [WT1](#); [Wilms tumor 1](#); [GUD](#); [Wilms tumor protein](#); [AWT1](#); [WAGR](#); [WIT 2](#); amino-terminal domain of [EWS](#)|last three zinc fingers of the DNA-binding domain of [WT1](#); [WT33](#); [NPHS4](#); [WIT-2](#); [EWS-WT1](#);**Gene ID** [7490](#)**mRNA Refseq** [NM\\_000378](#)**Protein Refseq** [NP\\_000369](#)**MIM** [607102](#)**UniProt ID** [P19544](#) Tel: 1-631-559-9269 1-516-512-3133 Email: [info@creative-biomart.com](mailto:info@creative-biomart.com)  Fax: 1-631-938-8127 45-1 Ramsey Road, Shirley, NY 11967, USA

**SDS-PAGE**



 Tel: 1-631-559-9269 1-516-512-3133

 Email: [info@creative-biomart.com](mailto:info@creative-biomart.com)  Fax: 1-631-938-8127

 45-1 Ramsey Road, Shirley, NY 11967, USA