

Recombinant Human WT1 Protein, His-tagged

Cat. No. WT1-589H Lot. No. (See product label)

SPECIFICATION

Product Overview Recombinant Human WT1 Protein (Met1-Ser150) with N-His tag was expressed in E. coli.

Species Human

Source E.coli

ProteinLength Met1-Ser150

Description This gene encodes a transcription factor that contains four zinc-finger motifs at the C-terminus and a proline/glutamine-rich DNA-binding domain at the N-terminus. It has an essential role in the normal development of the urogenital system, and it is mutated in a small subset of patients with Wilms tumor. This gene exhibits complex tissue-specific and polymorphic imprinting pattern, with biallelic, and monoallelic expression from the maternal and paternal alleles in different tissues. Multiple transcript variants have been described. In several variants, there is evidence for the use of a non-AUG (CUG) translation initiation codon upstream of, and in-frame with the first AUG. Authors of PMID:7926762 also provide evidence that WT1 mRNA undergoes RNA editing in human and rat, and that this process is tissue-restricted and developmentally regulated.

Form Freeze-dried powder

Molecular Mass Predicted Molecular Mass: 18.8 kDa
Accurate Molecular Mass: 22 kDa

 Tel: 1-631-559-9269 1-516-512-3133

 Email: info@creative-biomart.com  Fax: 1-631-938-8127

 45-1 Ramsey Road, Shirley, NY 11967, USA

Purity	> 90%
Applications	Positive Control; Immunogen; SDS-PAGE; WB.
Stability	The thermal stability is described by the loss rate. The loss rate was determined by accelerated thermal degradation test, that is, incubate the protein at 37 centigrade for 48h, and no obvious degradation and precipitation were observed. The loss rate is less than 5% within the expiration date under appropriate storage condition.
Storage	Avoid repeated freeze/thaw cycles. Store at 2-8 centigrade for one month. Aliquot and store at -80 centigrade for 12 months.
Storage Buffer	PBS, pH7.4, containing 0.01% SKL, 1 mM DTT, 5% Trehalose and Proclin300.
Reconstitution	Reconstitute in sterile water to a concentration of 0.1-1.0 mg/mL. Do not vortex.

GENE INFORMATION

Gene Name	WT1 Wilms tumor 1 [Homo sapiens (human)]
Official Symbol	WT1
Synonyms	WT1; Wilms tumor 1; GUD; Wilms tumor protein; AWT1; WAGR; WIT 2; amino-terminal domain of EWS last three zinc fingers of the DNA-binding domain of WT1; WT33; NPHS4; WIT-2; EWS-WT1
Gene ID	7490
mRNA Refseq	NM_000378
Protein Refseq	NP_000369

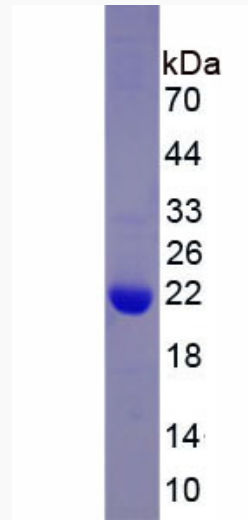
 Tel: 1-631-559-9269 1-516-512-3133

 Email: info@creative-biomart.com  Fax: 1-631-938-8127

 45-1 Ramsey Road, Shirley, NY 11967, USA

MIM 607102

UniProt ID P19544



Tel: 1-631-559-9269 1-516-512-3133

Email: info@creative-biomart.com Fax: 1-631-938-8127

45-1 Ramsey Road, Shirley, NY 11967, USA