

## Recombinant Human WT1 Protein (Thr317-Gln446), N-His tagged

Cat. No. WT1-6572H Lot. No. (See product label)

### SPECIFICATION

<b>Product Overview</b>	Recombinant human WT1 (Thr317-Gln446) fused with the N-His tag was expressed in E. coli.
<b>Species</b>	Human
<b>Source</b>	E.coli
<b>ProteinLength</b>	Thr317-Gln446
<b>Form</b>	Lyophilized powder/frozen liquid
<b>Molecular Mass</b>	18.10 kDa
<b>Purity</b>	> 90 % as determined by SDS-PAGE
<b>Notes</b>	For research use only.
<b>Storage</b>	Use a manual defrost freezer and avoid repeated freeze thaw cycles. Store at 2 to 8 centigrade for one week. Store at -20 to -80 centigrade for twelve months from the date of receipt.
<b>Storage Buffer</b>	0.01M PBS, pH 7.4, 0.02 % NLS
<b>Reconstitution</b>	Reconstitute in sterile water for a stock solution.

 Tel: 1-631-559-9269 1-516-512-3133

 Email: [info@creative-biomart.com](mailto:info@creative-biomart.com)  Fax: 1-631-938-8127

 45-1 Ramsey Road, Shirley, NY 11967, USA

**Shipping**

They are shipped out with dry ice/blue ice unless customers require otherwise.

**GENE INFORMATION**
**Gene Name**

WT1 Wilms tumor 1 [ Homo sapiens (human) ]

**Official Symbol**

WT1

**Synonyms**

WT1; Wilms tumor 1; GUD; Wilms tumor protein; AWT1; WAGR; WIT 2; amino-terminal domain of EWS||last three zinc fingers of the DNA-binding domain of WT1; WT33; NPHS4; WIT-2; EWS-WT1;

**Gene ID**

7490

**mRNA Refseq**

NM\_000378

**Protein Refseq**

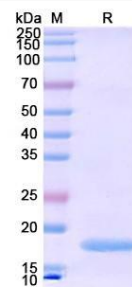
NP\_000369

**MIM**

607102

**UniProt ID**

P19544

**SDS-PAGE**


 Tel: 1-631-559-9269 1-516-512-3133

 Email: [info@creative-biomart.com](mailto:info@creative-biomart.com)  Fax: 1-631-938-8127

 45-1 Ramsey Road, Shirley, NY 11967, USA