

# Recombinant Human WTAP Protein, Myc/DDK-tagged, C13 and N15-labeled

**Cat. No.** WTAP-1453H    **Lot. No.** (See product label)

## SPECIFICATION

<b>Product Overview</b>	WTAP MS Standard C13 and N15-labeled recombinant protein (NP_690596) with a C-terminal MYC/DDK tag, was expressed in HEK293 cells.
<b>Species</b>	Human
<b>Source</b>	HEK293
<b>Description</b>	The Wilms tumor suppressor gene WT1 appears to play a role in both transcriptional and posttranscriptional regulation of certain cellular genes. This gene encodes a WT1-associating protein, which is a ubiquitously expressed nuclear protein. Like WT1 protein, this protein is localized throughout the nucleoplasm as well as in speckles and partially colocalizes with splicing factors. Alternative splicing of this gene results in several transcript variants encoding three different isoforms.
<b>Molecular Mass</b>	17.6 kDa
<b>AA Sequence</b>	MTNEEPLPKKVR LSETDFKVMARDELILRWKQYEAYVQALEGKYTDLNSNDVTGLR ESEEK LKQQQESARRENILVMRLATKEQEMQECTTQIQYLKQVQQPSVAQLRSTM VDPAINLFF LKMKG ELEQTKDKLEQAQNELSAWKFTPDRTRTRPLEQKLISEEDLAA NDILDYKDDDDKV
<b>Purity</b>	> 80% as determined by SDS-PAGE and Coomassie blue staining
<b>Stability</b>	Stable for 3 months from receipt of products under proper storage and handling

 Tel: 1-631-559-9269    1-516-512-3133

 Email: [info@creative-biomart.com](mailto:info@creative-biomart.com)     Fax: 1-631-938-8127

 45-1 Ramsey Road, Shirley, NY 11967, USA

conditions.

**Storage** Store at -80 centigrade. Avoid repeated freeze-thaw cycles.

**Concentration** 50 µg/mL as determined by BCA

**Storage Buffer** 100 mM glycine, 25 mM Tris-HCl, pH 7.3.

## GENE INFORMATION

**Gene Name** [WTAP Wilms tumor 1 associated protein \[ Homo sapiens \(human\) \]](#)

**Official Symbol** [WTAP](#)

**Synonyms** WTAP; Wilms tumor 1 associated protein; pre-mRNA-splicing regulator WTAP; KIAA0105; MGC3925; hFL(2)D; PNAS-132; WT1-associated protein; female-lethal(2)D homolog; wilms tumor 1-associating protein; Wilms tumour 1-associating protein; putative pre-mRNA splicing regulator female-lethal(2D); DKFZp686F20131;

**Gene ID** [9589](#)

**mRNA Refseq** [NM\\_152857](#)

**Protein Refseq** [NP\\_690596](#)

**MIM** [605442](#)

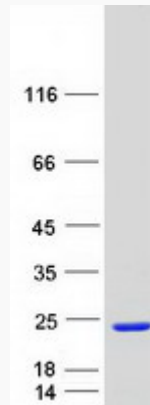
**UniProt ID** [Q15007](#)

 Tel: 1-631-559-9269 1-516-512-3133

 Email: [info@creative-biomart.com](mailto:info@creative-biomart.com)  Fax: 1-631-938-8127

 45-1 Ramsey Road, Shirley, NY 11967, USA

**SDS-PAGE**



 Tel: 1-631-559-9269 1-516-512-3133

 Email: [info@creative-biomart.com](mailto:info@creative-biomart.com)  Fax: 1-631-938-8127

 45-1 Ramsey Road, Shirley, NY 11967, USA