

Recombinant Human WTAP protein, GST-tagged

Cat. No. WTAP-321H Lot. No. (See product label)

SPECIFICATION

Product Overview	Full-length recombinant human WTAP protein was expressed by baculovirus in Sf9 insect cells using an N-terminal GST tag.
Species	Human
Source	Insect Cells
Description	The Wilms tumor suppressor gene WT1 appears to play a role in both transcriptional and posttranscriptional regulation of certain cellular genes. This gene encodes a WT1-associating protein, which is a ubiquitously expressed nuclear protein. Like WT1 protein, this protein is localized throughout the nucleoplasm as well as in speckles and partially colocalizes with splicing factors. Alternative splicing of this gene results in several transcript variants encoding three different isoforms.
Form	50mM Tris-HCl, pH 7.5, 150mM NaCl, 10mM glutathione, 0.1mM EDTA, 0.25mM DTT, 0.1mM PMSF, 25% glycerol
Molecular Mass	72 kDa
Purity	The purity of WTAP was determined to be >70% by densitometry.
Applications	Enzyme Assay; WB
Stability	1 year at -70 centigrade

 Tel: 1-631-559-9269 1-516-512-3133

 Email: info@creative-biomart.com  Fax: 1-631-938-8127

 45-1 Ramsey Road, Shirley, NY 11967, USA

Storage Store product at -70 centigrade. For optimal storage, aliquot target into smaller quantities after centrifugation and store at recommended temperature. For most favorable performance, avoid repeated handling and multiple freeze/thaw cycles.

Concentration 0.1 µg/µL

GENE INFORMATION

Gene Name WT1 associated protein [Homo sapiens (human)]

Official Symbol WTAP

Synonyms Mum2

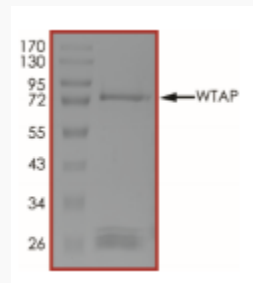
Gene ID 9589

mRNA Refseq NM_004906

Protein Refseq NP_004897

MIM 605442

UniProt ID Q15007



Tel: 1-631-559-9269 1-516-512-3133

Email: info@creative-biomart.com Fax: 1-631-938-8127

45-1 Ramsey Road, Shirley, NY 11967, USA