

Recombinant Human WTAP Protein, His-tagged

Cat. No. WTAP-447H Lot. No. (See product label)

SPECIFICATION

Product Overview	Recombinant Human WTAP(Met1~Asp150) fused with His tag at N-terminal was expressed in E. coli.
Species	Human
Source	E.coli
ProteinLength	Met1~Asp150
Description	The Wilms tumor suppressor gene WT1 appears to play a role in both transcriptional and posttranscriptional regulation of certain cellular genes. This gene encodes a WT1-associating protein, which is a ubiquitously expressed nuclear protein. Like WT1 protein, this protein is localized throughout the nucleoplasm as well as in speckles and partially colocalizes with splicing factors. Alternative splicing of this gene results in several transcript variants encoding three different isoforms.
Form	PBS, pH7.4, containing 0.01% SKL, 1mM DTT, 5% Trehalose and Proclin300.
Molecular Mass	21.3kDa
Endotoxin	<1.0EU per 1ug (determined by the LAL method)
Purity	> 95%
Applications	Positive Control; Immunogen; SDS-PAGE; WB.

 Tel: 1-631-559-9269 1-516-512-3133

 Email: info@creative-biomart.com  Fax: 1-631-938-8127

 45-1 Ramsey Road, Shirley, NY 11967, USA

If bio-activity of the protein is needed, please check active protein

Stability

The thermal stability is described by the loss rate. The loss rate was determined by accelerated thermal degradation test, that is, incubate the protein at 37 centigrade for 48h, and no obvious degradation and precipitation were observed. The loss rate is less than 5% within the expiration date under appropriate storage condition.

Storage

Avoid repeated freeze/thaw cycles. Store at 2-8 centigrade for one month. Aliquot and store at -80 centigrade for 12 months.

Reconstitution

Reconstitute in PBS or others

GENE INFORMATION

Gene Name

[WTAP Wilms tumor 1 associated protein \[Homo sapiens \]](#)

Official Symbol

[WTAP](#)

Synonyms

WTAP; Wilms tumor 1 associated protein; pre-mRNA-splicing regulator WTAP; KIAA0105; MGC3925; hFL(2)D; PNAS-132; WT1-associated protein; female-lethal(2)D homolog; wilms tumor 1-associating protein; Wilms tumour 1-associating protein; putative pre-mRNA splicing regulator female-lethal(2D); DKFZp686F20131;

Gene ID

[9589](#)

mRNA Refseq

[NM_004906](#)

Protein Refseq

[NP_004897](#)

MIM

[605442](#)

 Tel: 1-631-559-9269 1-516-512-3133

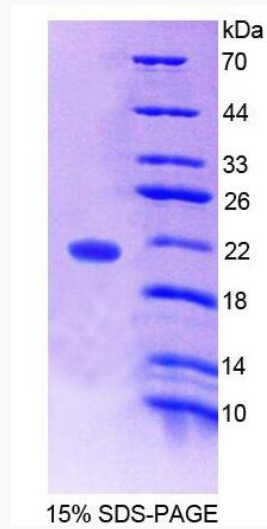
 Email: info@creative-biomart.com  Fax: 1-631-938-8127

 45-1 Ramsey Road, Shirley, NY 11967, USA



UniProt ID

Q15007



Tel: 1-631-559-9269 1-516-512-3133

Email: info@creative-biomart.com Fax: 1-631-938-8127

45-1 Ramsey Road, Shirley, NY 11967, USA