

# Recombinant Human WTAP Protein (Met1-Asp150), His tagged

Cat. No. WTAP-6710H Lot. No. (See product label)

## SPECIFICATION

<b>Product Overview</b>	Recombinant human WTAP (Met1-Asp150) fused with His tag was expressed in E. coli.
<b>Species</b>	Human
<b>Source</b>	E.coli
<b>ProteinLength</b>	Met1-Asp150
<b>Description</b>	<p>Wilms' tumor 1-associating protein (WTAP) was previously identified as a protein associated with Wilms' tumor-1 (WT-1) protein that is essential for the development of the genitourinary system. WT1 was originally identified as a tumor suppressor for Wilms' tumor, but it is also overexpressed in a variety of cancer cells. The WTAP-WT1 axis in vascular cells suggest that WTAP is a vital and multifaceted regulator of vascular remodeling. WTAP has been suggested to function in alternative splicing, stabilization of mRNA, and cell growth. Knocking down endogenous WTAP increased Smooth muscle cells (SMCs) proliferation, because of increased DNA synthesis and G (1)/S phase transition, together with reduced apoptosis.</p>
<b>Form</b>	Lyophilized powder/frozen liquid
<b>Molecular Mass</b>	19.97 kDa
<b>Purity</b>	> 90 % as determined by SDS-PAGE

 Tel: 1-631-559-9269 1-516-512-3133

 Email: [info@creative-biomart.com](mailto:info@creative-biomart.com)  Fax: 1-631-938-8127

 45-1 Ramsey Road, Shirley, NY 11967, USA

<b>Notes</b>	For research use only.
<b>Storage</b>	Use a manual defrost freezer and avoid repeated freeze thaw cycles. Store at 2 to 8 centigrade for one week. Store at -20 to -80 centigrade for twelve months from the date of receipt.
<b>Storage Buffer</b>	Supplied as solution form in PBS, pH 7.5 or lyophilized from PBS, pH 7.6.
<b>Reconstitution</b>	Reconstitute in sterile water for a stock solution.
<b>Shipping</b>	They are shipped out with dry ice/blue ice unless customers require otherwise.
<b>GENE INFORMATION</b>	
<b>Gene Name</b>	WTAP Wilms tumor 1 associated protein [ Homo sapiens (human) ]
<b>Official Symbol</b>	WTAP
<b>Synonyms</b>	WTAP; Wilms tumor 1 associated protein; pre-mRNA-splicing regulator WTAP; KIAA0105; MGC3925; hFL (2)D; PNAS-132; WT1-associated protein; female-lethal (2)D homolog; wilms tumor 1-associating protein; Wilms tumour 1-associating protein; putative pre-mRNA splicing regulator female-lethal (2D); DKFZp686F20131;
<b>Gene ID</b>	9589
<b>mRNA Refseq</b>	NM_004906
<b>Protein Refseq</b>	NP_004897
<b>MIM</b>	605442

 Tel: 1-631-559-9269 1-516-512-3133

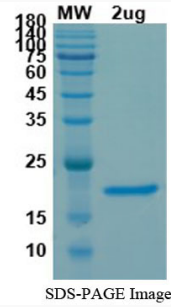
 Email: [info@creative-biomart.com](mailto:info@creative-biomart.com)  Fax: 1-631-938-8127

 45-1 Ramsey Road, Shirley, NY 11967, USA

UniProt ID

Q15007

SDS-PAGE



 Tel: 1-631-559-9269 1-516-512-3133

 Email: [info@creative-biomart.com](mailto:info@creative-biomart.com)  Fax: 1-631-938-8127

 45-1 Ramsey Road, Shirley, NY 11967, USA