

Recombinant Human WTIP Protein, Myc/DDK-tagged, C13 and N15-labeled

Cat. No. WTIP-1422H **Lot. No.** (See product label)

SPECIFICATION

Product Overview	WTIP MS Standard C13 and N15-labeled recombinant protein (NP_001073905) with a C-terminal MYC/DDK tag, was expressed in HEK293 cells.
Species	Human
Source	HEK293
Description	WTIP (WT1 Interacting Protein) is a Protein Coding gene. Diseases associated with WTIP include Wilms Tumor 1 and Prolidase Deficiency. Among its related pathways are Hippo signaling pathway - multiple species and Cellular Senescence (REACTOME). Gene Ontology (GO) annotations related to this gene include transcription corepressor activity. An important paralog of this gene is LIMD1.
Molecular Mass	44.9 kDa
AA Sequence	<p>MQRSRAGADEAALLLAGLALRELEPGCGSPGRGRRGPRPGPGDEAAPALGRRGK GSGGPEAGADGLSRGERGPRRAAVPELSAQPAGSPRASLAGSDGGGGGGGSARSS GISLGYDQRHGSPRSGRSDPRPGPGPPSVGSARSSVSSLGSRGSAGAYADFLPPG ACPAPARSPEPAGPAPFPLPALPLPPGREGGPSAAERRLEALTRELERALEARTAR DYFGICIKCGLGIYGAQQACQAMGSLYHTDCFTCDSCGRRLRGKAFYNVGEKVYQC EDFLYSGFQQTADKCSVCGHLIMEMILQALGKSYHPGCFRCSVCNECLDGVPFTVD VENNIYCVRDYHTVFAPKASCARPILPAQGCETTIRVVSMRDYHVACYHCEDCGL QLSGEEGRRCYPLAGHLLCRRCHLRRLQPGPLPSPTVHVTELTRTRPLEQKLISEED</p>

 Tel: 1-631-559-9269 1-516-512-3133

 Email: info@creative-biomart.com  Fax: 1-631-938-8127

 45-1 Ramsey Road, Shirley, NY 11967, USA



LAANDILDYKDDDDKV

Purity > 80% as determined by SDS-PAGE and Coomassie blue staining

Stability Stable for 3 months from receipt of products under proper storage and handling conditions.

Storage Store at -80 centigrade. Avoid repeated freeze-thaw cycles.

Concentration 50 µg/mL as determined by BCA

Storage Buffer 100 mM glycine, 25 mM Tris-HCl, pH 7.3.

GENE INFORMATION

Gene Name WTIP WT1 interacting protein [Homo sapiens (human)]

Official Symbol WTIP

Synonyms WTIP; WT1 interacting protein; Wilms tumor protein 1-interacting protein; Wilms tumor 1 interacting protein

Gene ID 126374

mRNA Refseq NM_001080436

Protein Refseq NP_001073905

MIM 614790

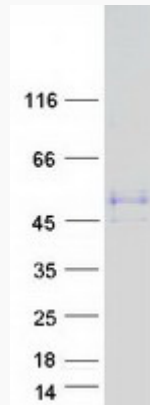
UniProt ID A6NIX2

Tel: 1-631-559-9269 1-516-512-3133

Email: info@creative-biomart.com Fax: 1-631-938-8127

45-1 Ramsey Road, Shirley, NY 11967, USA

SDS-PAGE



 Tel: 1-631-559-9269 1-516-512-3133

 Email: info@creative-biomart.com  Fax: 1-631-938-8127

 45-1 Ramsey Road, Shirley, NY 11967, USA