

Recombinant Human WWC1 Protein, Myc/DDK-tagged

Cat. No. WWC1-01H Lot. No. (See product label)

SPECIFICATION

Product Overview	Recombinant protein of human WW and C2 domain containing 1 (WWC1) with a C-Myc/DDK tag was expressed in HEK293T.
Species	Human
Source	HEK293
Description	The protein encoded by this gene is a cytoplasmic phosphoprotein that interacts with PRKC-zeta and dynein light chain-1. Alleles of this gene have been found that enhance memory in some individuals. Three transcript variants encoding different isoforms have been found for this gene.
Molecular Mass	125.1 kDa
Purity	> 80% as determined by SDS-PAGE and Coomassie blue staining
Stability	Stable for 12 months from the date of receipt of the product under proper storage and handling conditions. Avoid repeated freeze-thaw cycles.
Storage	Store at -80 centigrade.
Concentration	>50 µg/mL as determined by microplate BCA method
Storage Buffer	25 mM Tris.HCl, pH 7.3, 100 mM glycine, 10% glycerol

 Tel: 1-631-559-9269 1-516-512-3133

 Email: info@creative-biomart.com  Fax: 1-631-938-8127

 45-1 Ramsey Road, Shirley, NY 11967, USA

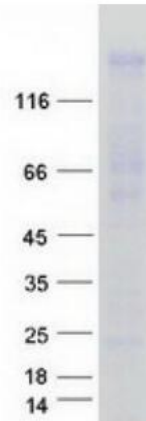
GENE INFORMATION

Gene Name	WWC1 WW and C2 domain containing 1 [Homo sapiens (human)]
Official Symbol	WWC1
Synonyms	WWC1; WW and C2 domain containing 1; KIBRA; HBEBP3; HBEBP36; MEMRYQTL; PPP1R168; protein KIBRA; HBeAg-binding protein 3; WW, C2 and coiled-coil domain containing 1; kidney and brain protein; protein WWC1; protein phosphatase 1, regulatory subunit 168
Gene ID	23286
mRNA Refseq	NM_015238
Protein Refseq	NP_056053
MIM	610533
UniProt ID	Q8IX03

 Tel: 1-631-559-9269 1-516-512-3133

 Email: info@creative-biomart.com  Fax: 1-631-938-8127

 45-1 Ramsey Road, Shirley, NY 11967, USA

SDS-PAGE

Coomassie blue staining of purified WWC1 protein. The protein was produced from HEK293T cells transfected with WWC1 cDNA clone using MegaTran 2.0.

 Tel: 1-631-559-9269 1-516-512-3133

 Email: info@creative-biomart.com  Fax: 1-631-938-8127

 45-1 Ramsey Road, Shirley, NY 11967, USA