

Recombinant Human WWC1 Protein, Myc/DDK-tagged, C13 and N15-labeled

Cat. No. WWC1-6176H Lot. No. (See product label)

SPECIFICATION

Product Overview

WWC1 MS Standard C13 and N15-labeled recombinant protein (NP_056053) with a C-terminal MYC/DDK tag, was expressed in HEK293 cells.

Species

Human

Source

HEK293

Description

The protein encoded by this gene is a cytoplasmic phosphoprotein that interacts with PRKC-zeta and dynein light chain-1. Alleles of this gene have been found that enhance memory in some individuals. Three transcript variants encoding different isoforms have been found for this gene.

Molecular Mass

125.1 kDa

AA Sequence

MPRPELPLPEGWEEARDFDGKVVYIDHTNRTTSWIDPRDRYTKPLTFADCISDELPL
 GWEEAYDPQVGDYFIDHNTKTTQIEDPRVQWRREQEHMLKDYLVVAQEALSAQKEI
 YQVKQQRLELAQQEYQQLHAVWEHKLGSQVSLVSGSSSSSKYDPEILKAEIATAKS
 RVNKLKREMVHLQHELQFKERGFQTLKKIDKKMSDAQGSYKLDEAQAVALRETKAIKK
 AITCGEKEKQDLIKSLAMLKDGFRTRDGRSHSDLWSSSSSLESSSFPLPKQYLDVSSQ
 TDISGSFGINSNNQLAEKVRRLRYEEAKRRIANLKIQLAKLDSEAWPGVLDSEDRDL
 ILINEKEELLKEMRFISPRKWTQGEVEQLEMARLEKDLQAARDTQSKALTERLKLN
 SKRNQLVRELEEATRQVATLHSQLKSLSSSMQSLSSGSSPGSLTSSRGSLVASSLD
 SSTASFTDLYYDPFEQLDSELQSKVEFLLLEGATGFRPSGCITTIHEDEVAKTQKAE

 Tel: 1-631-559-9269 1-516-512-3133

 Email: info@creative-biomart.com  Fax: 1-631-938-8127

 45-1 Ramsey Road, Shirley, NY 11967, USA

GGGRLQALRSLSGTPKSMTSLSPRSSLSSPSPPCSPLMADPLLAGDAFLNSLEFED
 PELSATLCELSLGNSAQERYRLEEPGTEGKQLGQAVNTAQGCGLKVACVSAAVSDE
 SVAGDSGVYEASVQRLGASEAAAFDSDESEAVGATRIQIALKYDEKNKQFAILIIQLS
 NLSALLQQQDQKVNIRVAVLPCSESTTCLFRTRPLDASDTLVFNEVFWVMSYPALH
 QKTLRVDVCTTDRSHLEECLGGAQISLAEVCRSGERSTRWYNLLSYKYLKKQSREL
 KPVGVMAPASGPASTDAVSALLEQTAVELEKRQEGRSSTQTLEDSWRYEETSENE
 AVAEVEVEVEVEVEEEDVFTEKASPDMDGYPALKVDKETNTETPAPSPTVVRPKDR
 RVGTPSQGPFLRGSTIIRSKTFSPGPQSQYVCRLNRSDSDSSTLSKKPPFVRNSLER
 RSVRMKRPSSVKSLRSERLIRTSLELDLQATRTWHSQLTQEISVLKELKEQLEQA
 KSHGEKELPQWLREDERFRLLLRLMLEKRM DRAEHKGELQTDKMMRAAAKDVHRLR
 GQSCKEPPEVQSFREKMAFFTRPRMNIPALSADDVTRTRPLEQKLISEEDLAANDIL
 DYKDDDDKV

Purity	> 80% as determined by SDS-PAGE and Coomassie blue staining
Stability	Stable for 3 months from receipt of products under proper storage and handling conditions.
Storage	Store at -80 centigrade. Avoid repeated freeze-thaw cycles.
Concentration	50 µg/mL as determined by BCA
Storage Buffer	100 mM glycine, 25 mM Tris-HCl, pH 7.3.

GENE INFORMATION

Gene Name	WWC1 WW and C2 domain containing 1 [Homo sapiens (human)]
Official Symbol	WWC1
Synonyms	WWC1; WW and C2 domain containing 1; WW, C2 and coiled coil domain containing

 Tel: 1-631-559-9269 1-516-512-3133

 Email: info@creative-biomart.com  Fax: 1-631-938-8127

 45-1 Ramsey Road, Shirley, NY 11967, USA

1; protein KIBRA; KIAA0869; KIBRA; protein WWC1; HBeAg-binding protein 3; kidney and brain protein; WW, C2 and coiled-coil domain containing 1; HBEBP3; HBEBP36; FLJ10865; FLJ23369;

Gene ID [23286](#)

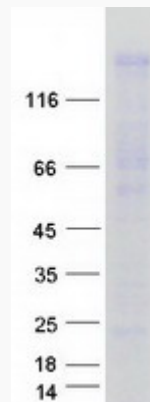
mRNA Refseq [NM_015238](#)

Protein Refseq [NP_056053](#)

MIM [610533](#)

UniProt ID [Q8IX03](#)

SDS-PAGE



 Tel: 1-631-559-9269 1-516-512-3133

 Email: info@creative-biomart.com  Fax: 1-631-938-8127

 45-1 Ramsey Road, Shirley, NY 11967, USA