

Recombinant Human WWP2 protein, His & T7-tagged

Cat. No. WWP2-1806H Lot. No. (See product label)

SPECIFICATION

Product Overview	Recombinant Human WWP2 aa. (His601~Glu870 (Accession # O00308)) fused with N-terminal His & T7 tag was produced in E. coli cells.
Species	Human
Source	E.coli
ProteinLength	His601~Glu870
Description	This gene encodes a member of the Nedd4 family of E3 ligases, which play an important role in protein ubiquitination. The encoded protein contains four WW domains and may play a role in multiple processes including chondrogenesis and the regulation of oncogenic signaling pathways via interactions with Smad proteins and the tumor suppressor PTEN. Alternatively spliced transcript variants encoding multiple isoforms have been observed for this gene, and a pseudogene of this gene is located on the long arm of chromosome 10.
Form	Freeze-dried powder
Molecular Mass	Predicted Molecular Mass: 35.9kDa
Endotoxin	<1.0EU per 1ug (determined by the LAL method)
Purity	>95%

 Tel: 1-631-559-9269 1-516-512-3133

 Email: info@creative-biomart.com  Fax: 1-631-938-8127

 45-1 Ramsey Road, Shirley, NY 11967, USA

Applications	SDS-PAGE; WB; ELISA; IP.
Stability	The thermal stability is described by the loss rate. The loss rate was determined by accelerated thermal degradation test, that is, incubate the protein at 37°C for 48h, and no obvious degradation and precipitation were observed. The loss rate is less than 5% within the expiration date under appropriate storage condition.
Storage	Avoid repeated freeze/thaw cycles. Store at 2-8°C for one month. Aliquot and store at -80°C for 12 months.
Storage buffer	Supplied as lyophilized form in 20mM Tris, 150mM NaCl, pH8.0, containing 1mM EDTA, 1mM DTT, 0.01% sarcosyl, 5% trehalose, and preservative.
Reconstitution	Reconstitute in sterile ddH ₂ O.
Isoelectric Point	5.3
GENE INFORMATION	
Gene Name	WWP2 WW domain containing E3 ubiquitin protein ligase 2 [Homo sapiens (human)]
Official Symbol	WWP2
Synonyms	WWP2; WW domain containing E3 ubiquitin protein ligase 2; AIP2; WWp2-like; NEDD4-like E3 ubiquitin-protein ligase WWP2; HECT-type E3 ubiquitin transferase WWP2; atrophin-1 interacting protein 2
Gene ID	11060
mRNA Refseq	NM_001270453.1

 Tel: 1-631-559-9269 1-516-512-3133

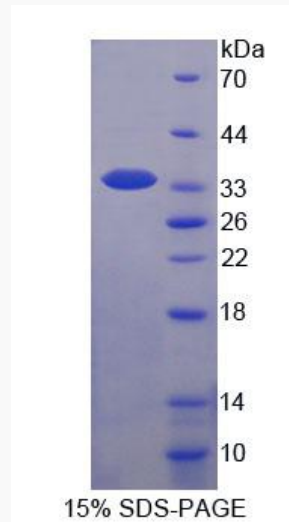
 Email: info@creative-biomart.com  Fax: 1-631-938-8127

 45-1 Ramsey Road, Shirley, NY 11967, USA

Protein Refseq NP_001257382.1

UniProt ID O00308

SDS-PAGE



 Tel: 1-631-559-9269 1-516-512-3133

 Email: info@creative-biomart.com  Fax: 1-631-938-8127

 45-1 Ramsey Road, Shirley, NY 11967, USA