

Recombinant Human WWP2 Protein, Myc/DDK-tagged, C13 and N15-labeled

Cat. No. WWP2-2842H Lot. No. (See product label)

SPECIFICATION

Product Overview

WWP2 MS Standard C13 and N15-labeled recombinant protein (NP_008945) with a C-terminal MYC/DDK tag, was expressed in HEK293 cells.

Species

Human

Source

HEK293

Description

This gene encodes a member of the Nedd4 family of E3 ligases, which play an important role in protein ubiquitination. The encoded protein contains four WW domains and may play a role in multiple processes including chondrogenesis and the regulation of oncogenic signaling pathways via interactions with Smad proteins and the tumor suppressor PTEN. Alternatively spliced transcript variants encoding multiple isoforms have been observed for this gene, and a pseudogene of this gene is located on the long arm of chromosome 10.

Molecular Mass

98.7 kDa

AA Sequence

MASASSSRAGVALPFEKSQTLKVVSAKPKVHNRQPRINSYVEVAVDGLPSETKKT
GKRIGSSELLWNEIIILNVTAQSHLDLKVWSCHTLRNELLGTASVNLNVLKNNGGKM
ENMQLTLNLQTENKGSVVSGGELTIFLDGPTVDLGNVPNGSALTDGSQPSRDSSG
TAVAPENRHQPPSTNCFGGRSRTHRHS GASARTTPATGEQSPGARSRHRQPVKN
SGHSGLANGTVNDEPTTATDPEEPSVVGVTSPPAAPLSVTPNPNTTSLPAPATPAE
GEEPSTSGTQQLPAAAQAPDALPAGWEQRELPNGRVYYVDHNTKTTTWERPLPPG

 Tel: 1-631-559-9269 1-516-512-3133

 Email: info@creative-biomart.com  Fax: 1-631-938-8127

 45-1 Ramsey Road, Shirley, NY 11967, USA

WEKRTDPRGRFYVDHNTRTTTWQRPTAEYVRNYEQWQSQRNQLQGAMQHFSQ
 RFLYQSSSASTDHDPLGPLPPGWEKRQDNGRVYYVNHNTRTTQWEDPRTQGMIIQ
 EPALPPGWEMKYTSEGVRYFVDHNTRTTTFKDRPRPGFESGTKQGSPGAYDRSFR
 WKYHQFRFLCHSNALPSHVKISVSRQTLFEDSFQQIMNMKPYDLRRRLYIIMRGEEG
 LDYGGIAREWFFLLSHEVLNPMYCLFEYAGKNNYCLQINPASSINPDHLTYFRFIGRFI
 AMALYHGKFIDTGFTLPPFYKRMLNKRPTLKDLESIDPEFYNSIVWIKENNLEECGLEL
 YFIQDMEILGKVTTHELKEGGESIRVTEENKEEYIMLLTDWRFTRGVVEEQTKAFLDGF
 NEVAPLEWLRYFDEKELELMLCGMQEIDMSDWQKSTIYRHYTKNSKQIQWFWQVV
 KEMDNEKRIRLLQFVTGTCRLPVGGFAELIGSNGPQKFCIDKVGKETWLP RSHTCFN
 RLDLPPYKSYEQLREKLLYAIEETEGFGQETRTRPLEQKLISEEDLAANDILDYKDDD
 DKV

Purity > 80% as determined by SDS-PAGE and Coomassie blue staining

Stability Stable for 3 months from receipt of products under proper storage and handling conditions.

Storage Store at -80 centigrade. Avoid repeated freeze-thaw cycles.

Concentration 50 µg/mL as determined by BCA

Storage Buffer 100 mM glycine, 25 mM Tris-HCl, pH 7.3.

GENE INFORMATION

Gene Name WWP2 WW domain containing E3 ubiquitin protein ligase 2 [Homo sapiens (human)]

Official Symbol WWP2

Synonyms WWP2; WW domain containing E3 ubiquitin protein ligase 2; NEDD4-like E3 ubiquitin-protein ligase WWP2; AIP2; WW domain-containing protein 2; atrophin-1

 Tel: 1-631-559-9269 1-516-512-3133

 Email: info@creative-biomart.com  Fax: 1-631-938-8127

 45-1 Ramsey Road, Shirley, NY 11967, USA

interacting protein 2; atrophin-1-interacting protein 2; Nedd-4-like ubiquitin-protein ligase; WWp2-like;

Gene ID 11060

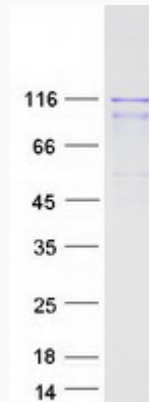
mRNA Refseq NM_007014

Protein Refseq NP_008945

MIM 602308

UniProt ID O00308

SDS-PAGE



 Tel: 1-631-559-9269 1-516-512-3133

 Email: info@creative-biomart.com  Fax: 1-631-938-8127

 45-1 Ramsey Road, Shirley, NY 11967, USA