

Recombinant Human WWP2 Protein (His601-Glu870), N-His tagged

Cat. No. WWP2-5585H Lot. No. (See product label)

SPECIFICATION

Product Overview	Recombinant human WWP2 (His601-Glu870) fused with the N-His tag was expressed in E. coli.
Species	Human
Source	E.coli
ProteinLength	His601-Glu870
Form	Lyophilized powder/frozen liquid
Molecular Mass	34.49 kDa
Purity	> 90 % as determined by SDS-PAGE
Notes	For research use only.
Storage	Use a manual defrost freezer and avoid repeated freeze thaw cycles. Store at 2 to 8 centigrade for one week. Store at -20 to -80 centigrade for twelve months from the date of receipt.
Storage Buffer	0.01M PBS, pH 7.4, 0.02 % NLS
Reconstitution	Reconstitute in sterile water for a stock solution.

 Tel: 1-631-559-9269 1-516-512-3133

 Email: info@creative-biomart.com  Fax: 1-631-938-8127

 45-1 Ramsey Road, Shirley, NY 11967, USA

Shipping They are shipped out with dry ice/blue ice unless customers require otherwise.

GENE INFORMATION

Gene Name [WWP2 WW domain containing E3 ubiquitin protein ligase 2 \[Homo sapiens \(human\) \]](#)

Official Symbol [WWP2](#)

Synonyms WWP2; WW domain containing E3 ubiquitin protein ligase 2; NEDD4-like E3 ubiquitin-protein ligase WWP2; AIP2; WW domain-containing protein 2; atrophin-1 interacting protein 2; atrophin-1-interacting protein 2; Nedd-4-like ubiquitin-protein ligase; WWp2-like;

Gene ID [11060](#)

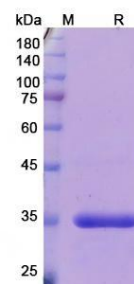
mRNA Refseq [NM_007014](#)

Protein Refseq [NP_008945](#)

MIM [602308](#)

UniProt ID [O00308](#)

SDS-PAGE



 Tel: 1-631-559-9269 1-516-512-3133

 Email: info@creative-biomart.com  Fax: 1-631-938-8127

 45-1 Ramsey Road, Shirley, NY 11967, USA