

# Recombinant Human WWTR1 Protein, Myc/DDK-tagged, C13 and N15-labeled

**Cat. No.** WWTR1-2240H    **Lot. No.** (See product label)

## SPECIFICATION

<b>Product Overview</b>	WWTR1 MS Standard C13 and N15-labeled recombinant protein (NP_056287) with a C-terminal MYC/DDK tag, was expressed in HEK293 cells.
<b>Species</b>	Human
<b>Source</b>	HEK293
<b>Description</b>	Transcriptional coactivator which acts as a downstream regulatory target in the Hippo signaling pathway that plays a pivotal role in organ size control and tumor suppression by restricting proliferation and promoting apoptosis. The core of this pathway is composed of a kinase cascade wherein STK3/MST2 and STK4/MST1, in complex with its regulatory protein SAV1, phosphorylates and activates LATS1/2 in complex with its regulatory protein MOB1, which in turn phosphorylates and inactivates YAP1 oncoprotein and WWTR1/TAZ. WWTR1 enhances PAX8 and NKX2-1/TTF1-dependent gene activation. Regulates the nuclear accumulation of SMADS and has a key role in coupling them to the transcriptional machinery such as the mediator complex. Regulates embryonic stem-cell self-renewal, promotes cell proliferation and epithelial-mesenchymal transition.
<b>Molecular Mass</b>	44.1 kDa
<b>AA Sequence</b>	MNPASAPPLPPPGQQVIHVTQDLDTDLEALFNSVMNPKPSSWRKKILPESFFKEPD SGSHSRQSSTDSSGGHPGPRLAGGAQHVRSHSSPASLQLGTGAGAAGSPAQQHA

 Tel: 1-631-559-9269    1-516-512-3133

 Email: [info@creative-biomart.com](mailto:info@creative-biomart.com)     Fax: 1-631-938-8127

 45-1 Ramsey Road, Shirley, NY 11967, USA

HLRQQSYDVTDELPLPPGWEMTFTATGQRYFLNHIEKITTWQDPRKAMNQPLNHM  
 NLHPAVSSTPVPQRSMAVSQPNLVMNHQHQQQMAPSTLSQQNHPTQNPPAGLMS  
 MPNALTTQQQQQKLRLQRIQMERERIRMRQEELMRQEALCRQLPMEAETLAPV  
 QAAVNPTMTDPMRSITNNSDPFLNGGPYHSREQSTDSGLGLGCYSVPTTPEDFL  
 SNVDEMDTGENAGQTPMNINPQQTRFPDFLDCLPGTNVDLGTLESEDLIPLFNDVE  
 SALNKSEFLTWLTRTRPLEQKLISEEDLAANDILDYKDDDDKV

**Purity** > 80% as determined by SDS-PAGE and Coomassie blue staining

**Stability** Stable for 3 months from receipt of products under proper storage and handling conditions.

**Storage** Store at -80 centigrade. Avoid repeated freeze-thaw cycles.

**Concentration** 50 µg/mL as determined by BCA

**Storage Buffer** 100 mM glycine, 25 mM Tris-HCl, pH 7.3.

## GENE INFORMATION

**Gene Name** [WWTR1 WW domain containing transcription regulator 1 \[ Homo sapiens \(human\) \]](#)

**Official Symbol** [WWTR1](#)

**Synonyms** WWTR1; WW domain containing transcription regulator 1; WW domain-containing transcription regulator protein 1; DKFZp586l1419; TAZ; transcriptional coactivator with PDZ-binding motif; transcriptional co-activator with PDZ-binding motif; FLJ27004; FLJ45718;

**Gene ID** [25937](#)

 Tel: 1-631-559-9269 1-516-512-3133

 Email: [info@creative-biomart.com](mailto:info@creative-biomart.com)  Fax: 1-631-938-8127

 45-1 Ramsey Road, Shirley, NY 11967, USA

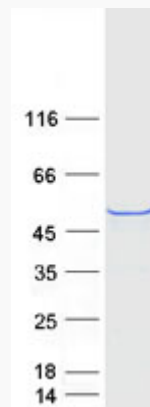
mRNA Refseq [NM\\_015472](#)

Protein Refseq [NP\\_056287](#)

MIM [607392](#)

UniProt ID [Q9GZV5](#)

SDS-PAGE



 Tel: 1-631-559-9269 1-516-512-3133

 Email: [info@creative-biomart.com](mailto:info@creative-biomart.com)  Fax: 1-631-938-8127

 45-1 Ramsey Road, Shirley, NY 11967, USA