

Recombinant Full Length Human WWTR1 Protein, C-Flag-tagged

Cat. No. WWTR1-240HFL **Lot. No.** (See product label)

SPECIFICATION

Product Overview	Recombinant Full Length Human WWTR1 Protein, fused to Flag-tag at C-terminus, was expressed in Mammalian cells.
Species	Human
Source	Mammalian Cells
Description	Transcriptional coactivator which acts as a downstream regulatory target in the Hippo signaling pathway that plays a pivotal role in organ size control and tumor suppression by restricting proliferation and promoting apoptosis. The core of this pathway is composed of a kinase cascade wherein STK3/MST2 and STK4/MST1, in complex with its regulatory protein SAV1, phosphorylates and activates LATS1/2 in complex with its regulatory protein MOB1, which in turn phosphorylates and inactivates YAP1 oncoprotein and WWTR1/TAZ. WWTR1 enhances PAX8 and NKX2-1/TTF1-dependent gene activation. Regulates the nuclear accumulation of SMADS and has a key role in coupling them to the transcriptional machinery such as the mediator complex. Regulates embryonic stem-cell self-renewal, promotes cell proliferation and epithelial-mesenchymal transition.
Form	25 mM Tris HCl, pH 7.3, 100 mM glycine, 10% glycerol.
Molecular Mass	43.9 kDa
AA Sequence	MNPASAPPPLPPPGQQVIHVTQDLDTDLEALFNSVMNPKPSSWRKKILPESFFKEPD

 Tel: 1-631-559-9269 1-516-512-3133

 Email: info@creative-biomart.com  Fax: 1-631-938-8127

 45-1 Ramsey Road, Shirley, NY 11967, USA

SGSHSRQSSTDSS GGHPGPRLAGGAQHVRSHSSPASLQLGTGAGAAGSPAQQHA
 HLRQQSYDVTDELPLPPGWEMTFTATGQR YFLNHIEKITTWQDPRKAMNQPLNHM
 NLHPAVSSTPVPQRSMAVSQPNLVMNHQHQQQMAPSTLSQQNHP TQNPPAGLMS
 MPNALTTQQQQQKLRLQRIQMERERIRMRQEELMRQEALCRQLPMEAETLAPV
 QAAVN PPTMTPDMRSITNNSSDPFLNGGPYHSREQSTDSGLGLGCYSVPTTPEDF
 LSNVDEMDTGENAGQTPMNI
 NPQQTRFPDFLDCLPGTNVDLGTLESEDLIPLFNDVESALNKSEPFLTWLTRTRPLE
 QKLISEEDLAANDILDYKDDDDKV

Purity	> 80% as determined by SDS-PAGE and Coomassie blue staining.
Stability	Stable for 12 months from the date of receipt of the product under proper storage and handling conditions. Avoid repeated freeze-thaw cycles.
Storage	Store at -80 centigrade.
Concentration	>50 ug/mL as determined by microplate BCA method.
Preparation	Recombinant protein was captured through anti-DDK affinity column followed by conventional chromatography steps.
Protein Families	Druggable Genome, Transcription Factors
Full Length	Full L.

GENE INFORMATION

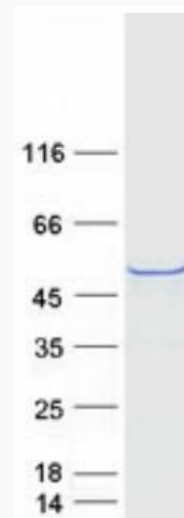
Gene Name	WWTR1 WW domain containing transcription regulator 1 [Homo sapiens (human)]
Official Symbol	WWTR1

 Tel: 1-631-559-9269 1-516-512-3133

 Email: info@creative-biomart.com  Fax: 1-631-938-8127

 45-1 Ramsey Road, Shirley, NY 11967, USA

Synonyms	TAZ
Gene ID	25937
mRNA Refseq	NM_015472.6
Protein Refseq	NP_056287.1
MIM	607392
UniProt ID	Q9GZV5



Coomassie blue staining of purified WWTR1 protein.

 Tel: 1-631-559-9269 1-516-512-3133

 Email: info@creative-biomart.com  Fax: 1-631-938-8127

 45-1 Ramsey Road, Shirley, NY 11967, USA