

Recombinant Human WWTR1 protein, His-tagged

Cat. No. WWTR1-3611H **Lot. No.** (See product label)

SPECIFICATION

Product Overview	Recombinant Human WWTR1 protein(160-294 aa), fused with N-terminal His tag, was expressed in E. coli.
Species	Human
Source	E. coli
ProteinLength	160-294 aa
Form	The purified protein was lyophilized from sterile phosphate-buffered saline (PBS: 58 mM Na ₂ HPO ₄ , 17 mM NaH ₂ PO ₄ , 68 mM NaCl, pH 7.4). Prior to lyophilization, 5% (w/v) trehalose and 5% (w/v) mannitol were incorporated as cryoprotective excipients. The protein was eluted with a buffer containing 300 mM imidazole.
AASequence	NQPLNHMNLHPAVSSTPVQQRSMASVQPNLVMNHQHQQQMAPSTLSQQNHPTQN PPAGLMSMPNALTTQQQQQKLRLLQRIQMERERIRMRQEELMRQEALCRQLPME AETLAPVQAAVNPPTMTPDMRSITNN
Purity	85%, by SDS-PAGE.
Storage	Store at 2-8°C for 1-2 weeks. Aliquot and store at -20°C to -80°C for up to 3 months, reconstitution with sterile water and addition of an equal volume of glycerol. Avoid repeat freeze-thaw cycles.
Reconstitution	It is recommended that sterile water be added to the vial to prepare a stock solution of

 Tel: 1-631-559-9269 1-516-512-3133

 Email: info@creative-biomart.com  Fax: 1-631-938-8127

 45-1 Ramsey Road, Shirley, NY 11967, USA

0.25 ug/ul. Centrifuge the vial at 4°C before opening to recover the entire contents.

GENE INFORMATION

Gene Name	WWTR1 WW domain containing transcription regulator 1 [Homo sapiens]
Official Symbol	WWTR1
Synonyms	WWTR1; WW domain containing transcription regulator 1; WW domain-containing transcription regulator protein 1; DKFZp586l1419; TAZ; transcriptional coactivator with PDZ-binding motif; transcriptional co-activator with PDZ-binding motif; FLJ27004; FLJ45718;
mRNA Refseq	NM_001168278
Protein Refseq	NP_001161750
MIM	607392
UniProt ID	Q9GZV5
Gene ID	25937

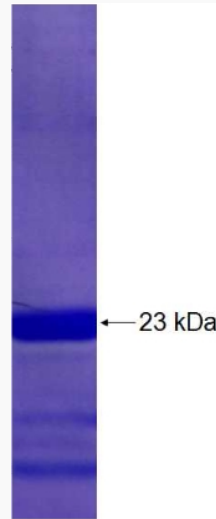
 Tel: 1-631-559-9269 1-516-512-3133

 Email: info@creative-biomart.com  Fax: 1-631-938-8127

 45-1 Ramsey Road, Shirley, NY 11967, USA



SDS-PAGE



Tel: 1-631-559-9269 1-516-512-3133

Email: info@creative-biomart.com Fax: 1-631-938-8127

45-1 Ramsey Road, Shirley, NY 11967, USA