

Recombinant Human WWTR1 protein, GST-tagged

Cat. No. WWTR1-3635H **Lot. No.** (See product label)

SPECIFICATION

Product Overview	Recombinant Human WWTR1 protein(160-294 aa), fused with N-terminal GST tag, was expressed in E. coli.
Species	Human
Source	E. coli
ProteinLength	160-294 aa
Form	The purified protein was lyophilized from sterile phosphate-buffered saline (PBS: 58 mM Na ₂ HPO ₄ , 17 mM NaH ₂ PO ₄ , 68 mM NaCl, pH 8.0). Prior to lyophilization, 5% (w/v) trehalose and 5% (w/v) mannitol were incorporated as cryoprotective excipients. The protein was eluted with a buffer containing 100 mM reduced glutathione (GSH).
AASequence	NQPLNHMNLHPAVSSTPVQQRSMVAVSQPNLVMNHQHQQQMAPSTLSQQNHPTQN PPAGLMSMPNALTTQQQQQKLRLQRIQMERERIRMRQEELMRQEALCRQLPME AETLAPVQAAVNPPTMTPDMRSITNN
Purity	80%, by SDS-PAGE.
Storage	Store at 2-8°C for 1-2 weeks. Aliquot and store at -20°C to -80°C for up to 3 months, reconstitution with sterile water and addition of an equal volume of glycerol. Avoid repeat freeze-thaw cycles.

 Tel: 1-631-559-9269 1-516-512-3133

 Email: info@creative-biomart.com  Fax: 1-631-938-8127

 45-1 Ramsey Road, Shirley, NY 11967, USA

Reconstitution It is recommended that sterile water be added to the vial to prepare a stock solution of 0.25 ug/ul. Centrifuge the vial at 4°C before opening to recover the entire contents.

GENE INFORMATION

Gene Name [WWTR1 WW domain containing transcription regulator 1 \[Homo sapiens \]](#)

Official Symbol [WWTR1](#)

Synonyms WWTR1; WW domain containing transcription regulator 1; WW domain-containing transcription regulator protein 1; DKFZp586l1419; TAZ; transcriptional coactivator with PDZ-binding motif; transcriptional co-activator with PDZ-binding motif; FLJ27004; FLJ45718;

mRNA Refseq [NM_001168278](#)

Protein Refseq [NP_001161750](#)

MIM [607392](#)

UniProt ID [Q9GZV5](#)

Gene ID [25937](#)

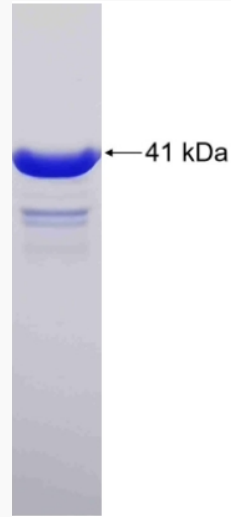
 Tel: 1-631-559-9269 1-516-512-3133

 Email: info@creative-biomart.com  Fax: 1-631-938-8127

 45-1 Ramsey Road, Shirley, NY 11967, USA



SDS-PAGE



Tel: 1-631-559-9269 1-516-512-3133

Email: info@creative-biomart.com Fax: 1-631-938-8127

45-1 Ramsey Road, Shirley, NY 11967, USA