

## Recombinant Human WWTR1 Protein (Met1-Leu400), N-His tagged

Cat. No. WWTR1-5796H Lot. No. (See product label)

### SPECIFICATION

<b>Product Overview</b>	Recombinant human WWTR1 (Met1-Leu400) fused with the N-His tag was expressed in E. coli.
<b>Species</b>	Human
<b>Source</b>	E.coli
<b>ProteinLength</b>	Met1-Leu400
<b>Form</b>	Lyophilized powder/frozen liquid
<b>Molecular Mass</b>	46.41 kDa
<b>Purity</b>	> 90 % as determined by SDS-PAGE
<b>Notes</b>	For research use only.
<b>Storage</b>	Use a manual defrost freezer and avoid repeated freeze thaw cycles. Store at 2 to 8 centigrade for one week. Store at -20 to -80 centigrade for twelve months from the date of receipt.
<b>Storage Buffer</b>	0.01M PBS, pH 7.4, 0.02 % NLS
<b>Reconstitution</b>	Reconstitute in sterile water for a stock solution.

 Tel: 1-631-559-9269 1-516-512-3133

 Email: [info@creative-biomart.com](mailto:info@creative-biomart.com)  Fax: 1-631-938-8127

 45-1 Ramsey Road, Shirley, NY 11967, USA

**Shipping** They are shipped out with dry ice/blue ice unless customers require otherwise.

## GENE INFORMATION

**Gene Name** [WWTR1 WW domain containing transcription regulator 1 \[ Homo sapiens \(human\) \]](#)

**Official Symbol** [WWTR1](#)

**Synonyms** WWTR1; WW domain containing transcription regulator 1; WW domain-containing transcription regulator protein 1; DKFZp586l1419; TAZ; transcriptional coactivator with PDZ-binding motif; transcriptional co-activator with PDZ-binding motif; FLJ27004; FLJ45718;

**Gene ID** [25937](#)

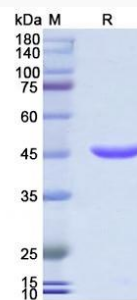
**mRNA Refseq** [NM\\_001168278](#)

**Protein Refseq** [NP\\_001161750](#)

**MIM** [607392](#)

**UniProt ID** [Q9GZV5](#)

### SDS-PAGE



 Tel: 1-631-559-9269 1-516-512-3133

 Email: [info@creative-biomart.com](mailto:info@creative-biomart.com)  Fax: 1-631-938-8127

 45-1 Ramsey Road, Shirley, NY 11967, USA