

Recombinant Mouse Wee1 protein(1-646aa), His-tagged

Cat. No. Wee1-6652M Lot. No. (See product label)

SPECIFICATION

Product Overview	Recombinant Mouse Wee1 protein(P47810)(1-646aa), fused with N-terminal His tag, was expressed in E.coli.
Species	Mouse
Source	E.coli
ProteinLength	1-646aa
Form	If the delivery form is liquid, the default storage buffer is Tris/PBS-based buffer, 5%-50% glycerol. If the delivery form is lyophilized powder, the buffer before lyophilization is Tris/PBS-based buffer, 6% Trehalose, pH 8.0.
Molecular Mass	77.5 kDa
Purity	Greater than 85% as determined by SDS-PAGE.
Storage	Store at -20°C/-80°C upon receipt, aliquoting is necessary for mutiple use. Avoid repeated freeze-thaw cycles.
Reconstitution	We recommend that this vial be briefly centrifuged prior to opening to bring the contents to the bottom. Please reconstitute protein in deionized sterile water to a concentration of 0.1-1.0 mg/mL. We recommend to add 5-50% of glycerol (final concentration) and aliquot for long-term storage at -20°C/-80°C.

 Tel: 1-631-559-9269 1-516-512-3133

 Email: info@creative-biomart.com  Fax: 1-631-938-8127

 45-1 Ramsey Road, Shirley, NY 11967, USA

AA Sequence

MSFLSRQQPPPTRRVGAAYSLRQKLIFSPGSDCEEEEEEEEEEGSGHSTGEDSAFQE
 PDSPLPSARSPAEAEAERRRRSPGAEPSSPGELEDDLLLQGGGGGAQAAGGGAEG
 DSWEEEFGSSSPVKSPSTAYFLSSPFSPVRCGGPGDASPQGCAPRAMDDPCS
 PQPDPSTPPHKTFRKLRLFDTPHTPKSLLSKARVIDSGSVKLRGSSLFMDTEKSGK
 REFDTRQTPQVNINPFTPDPVLLHSSGRRCRGRKRAYFNDSSSEDMEASDYEFEDETR
 PAKRITITESNMKSRYTTEFHELEKIGSGEFGSVFKCVKRLDGCYAIKRSKKPLAGSV
 DEQNALREVYAHAVLGQHHPHVRYFSAWAEDDHMLIQNEYCNGGSLADAISENYR
 VMSYLTEVELKDLLLQVGRGLRYIHSMMLVHMDIKPSNIFISRTSIPNAVSEEGDEDD
 WISNKVMFKIGDLGHVTRISSPQVEEGDSRFLANEVLQENYSHLPKADIFALALTVC
 AAGAEPLPRNGEQWHEIRQGRLPRIPQVLSQEVTLLRVMIHDPERRPSAMELVK
 HSVLLSASRKSAEQLRIELNAEKFKNSLLQKELKKAQMAAKVAAEERALFTDRMATR
 STTQSNRTSRLIGKKMNRSVSLTIY

GENE INFORMATION

Gene Name [Wee1 WEE 1 homolog 1 \(S. pombe\) \[Mus musculus \]](#)

Official Symbol [Wee1](#)

Synonyms WEE1; WEE 1 homolog 1 (S. pombe); wee1-like protein kinase; wee1A kinase;
 WEE1 tyrosine kinase; Wee1A;

Gene ID [22390](#)

mRNA Refseq [NM_009516](#)

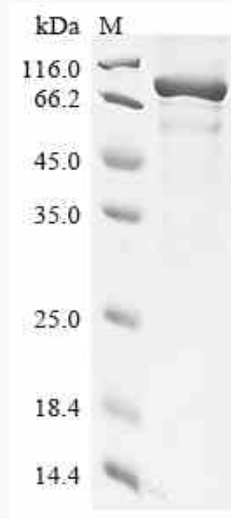
Protein Refseq [NP_033542](#)

 Tel: 1-631-559-9269 1-516-512-3133

 Email: info@creative-biomart.com  Fax: 1-631-938-8127

 45-1 Ramsey Road, Shirley, NY 11967, USA

SDS-PAGE



 Tel: 1-631-559-9269 1-516-512-3133

 Email: info@creative-biomart.com  Fax: 1-631-938-8127

 45-1 Ramsey Road, Shirley, NY 11967, USA