

Recombinant Mouse Wfdc1 protein, His-tagged

Cat. No. Wfdc1-5733M **Lot. No.** (See product label)

SPECIFICATION

Product Overview	Recombinant Mouse Wfdc1 protein(Q9ESH5)(Gln24-Pro211), fused with N-terminal His tag, was expressed in E.coli.
Species	Mouse
Source	E.coli
ProteinLength	Gln24-Pro211
Tag	N-His
Form	Supplied as 0.22µm filtered solution in PBS (pH 7.4).
Molecular Mass	The protein has a predicted MW of 21.9 kDa. The protein migrates to 27-30 kDa based on Tris-Bis PAGE result.
Endotoxin	Less than 1EU per µg by the LAL method.
Purity	> 95% as determined by Tris-Bis PAGE;> 95% as determined by HPLC
Storage	Valid for 12 months from date of receipt when stored at -80°C. Recommend to aliquot the protein into smaller quantities for optimal storage. Please do not repeated freeze-thaw cycles.
Reconstitution	It is recommended that sterile water be added to the vial to prepare a stock solution of

 Tel: 1-631-559-9269 1-516-512-3133

 Email: info@creative-biomart.com  Fax: 1-631-938-8127

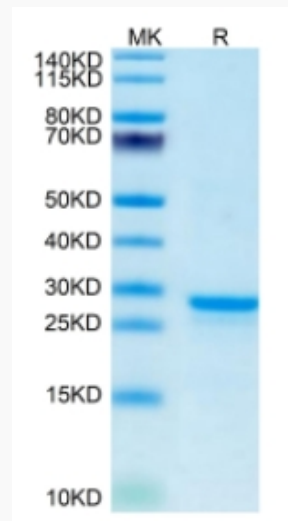
 45-1 Ramsey Road, Shirley, NY 11967, USA

0.2 ug/ul. Centrifuge the vial at 4°C before opening to recover the entire contents.

GENE INFORMATION

Gene Name	Wfdc1 WAP four-disulfide core domain 1 [<i>Mus musculus</i>]
Official Symbol	Wfdc1
Synonyms	WFDC1; WAP four-disulfide core domain 1; WAP four-disulfide core domain protein 1; ps20 growth inhibitor; prostate stromal protein ps20; ps20; 2310058A03Rik;
Gene ID	67866
mRNA Refseq	NM_023395
Protein Refseq	NP_075884

Tris-Bis PAGE



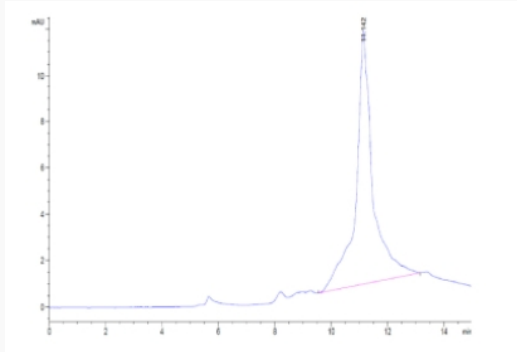
Tel: 1-631-559-9269 1-516-512-3133

Email: info@creative-biomart.com Fax: 1-631-938-8127

45-1 Ramsey Road, Shirley, NY 11967, USA



SEC-HPLC



Tel: 1-631-559-9269 1-516-512-3133

Email: info@creative-biomart.com Fax: 1-631-938-8127

45-1 Ramsey Road, Shirley, NY 11967, USA