

## Recombinant Mouse Wfdc1 Protein, His/DDK-tagged

Cat. No. Wfdc1-6994M Lot. No. (See product label)

### SPECIFICATION

<b>Product Overview</b>	Purified recombinant protein of mouse WAP four-disulfide core domain 1 (WFDC1), with N-terminal His/DDK tag, expressed in human cells.
<b>Species</b>	Mouse
<b>Source</b>	HEK293
<b>ProteinLength</b>	Gln24 – Pro211
<b>Description</b>	Has growth inhibitory activity.
<b>Molecular Mass</b>	23 kDa
<b>Purity</b>	> 80% as determined by SDS-PAGE and Coomassie blue staining
<b>Stability</b>	Stable for 12 months from the date of receipt of the product under proper storage and handling conditions. Avoid repeated freeze-thaw cycles.
<b>Storage</b>	Store at -80 centigrade.
<b>Concentration</b>	>50 µg/mL as determined by microplate BCA method
<b>Storage Buffer</b>	PBS, pH 7.4, 10% glycerol

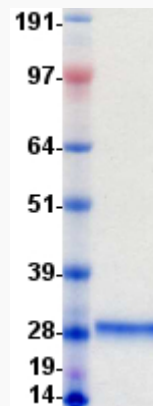
### GENE INFORMATION

 Tel: 1-631-559-9269 1-516-512-3133

 Email: [info@creative-biomart.com](mailto:info@creative-biomart.com)  Fax: 1-631-938-8127

 45-1 Ramsey Road, Shirley, NY 11967, USA

<b>Gene Name</b>	Wfdc1 WAP four-disulfide core domain 1 [ Mus musculus (house mouse) ]
<b>Official Symbol</b>	Wfdc1
<b>Synonyms</b>	WFDC1; WAP four-disulfide core domain 1; WAP four-disulfide core domain protein 1; ps20 growth inhibitor; prostate stromal protein ps20; ps20; 2310058A03Rik
<b>Gene ID</b>	67866
<b>mRNA Refseq</b>	NM_023395
<b>Protein Refseq</b>	NP_075884
<b>UniProt ID</b>	Q9ESH5

**SDS-PAGE**


 Tel: 1-631-559-9269 1-516-512-3133

 Email: [info@creative-biomart.com](mailto:info@creative-biomart.com)  Fax: 1-631-938-8127

 45-1 Ramsey Road, Shirley, NY 11967, USA