

## Recombinant Mouse Wif1 Protein, His-tagged

**Cat. No.** Wif1-7382M    **Lot. No.** (See product label)

### SPECIFICATION

<b>Product Overview</b>	Recombinant Mouse Wif1 protein with a His tag was expressed in insect cells.
<b>Species</b>	Mouse
<b>Source</b>	Insect Cells
<b>ProteinLength</b>	29-379
<b>Description</b>	Binds to WNT proteins and inhibits their activities. May be involved in mesoderm segmentation.
<b>Form</b>	Liquid
<b>Molecular Mass</b>	39.4 kDa
<b>AA Sequence</b>	GQPPEESLYLWIDAHQARVLIGFEEDILIVSEGKMAPFTHDFRKAQQRMPAIPVNIHS MNFTWQAAGQAEYFYEFSLRSLDKGIMADPTVNVPLLGTVPHKASVVQVGFPCLG KQDGVAAFEVNVIVMNSEGNTILRTPQNAIFFKTCQQAECPPGGCRNGGFCNERRVC ECPDGFYGPHEKALCIPRCMNGGLCVTPGFICPPGFYGVNCDKANCSTTCFNG GTCFYPGKICPPGLEGEQCELSKCPQPCRNGGKICIGKSKCKCPKGYQGDLCSKP VCEPGCGAHGTCHEPNKCCQCREGWHGRHCNKRYGASLMHAPRPAGAGLERHTP SLKKAEDRRDPPESNYIWVEHHHHHH
<b>Endotoxin</b>	< 1.0 EU/μg of protein (determined by LAL method)

 Tel: 1-631-559-9269    1-516-512-3133

 Email: [info@creative-biomart.com](mailto:info@creative-biomart.com)     Fax: 1-631-938-8127

 45-1 Ramsey Road, Shirley, NY 11967, USA

<b>Purity</b>	> 90 % by SDS-PAGE
<b>Stability</b>	Shelf life: one year from despatch.
<b>Storage</b>	Store undiluted at 2-8 centigrade for one week or (in aliquots) at -20 to -80 centigrade for longer. Avoid repeated freezing and thawing.
<b>Concentration</b>	1.0 mg/mL (determined by absorbance at 280nm)
<b>Storage Buffer</b>	20 mM MES (pH 5.5) containing 1 mM DTT, 1 mM PMSF, 30 % glycerol.

## GENE INFORMATION

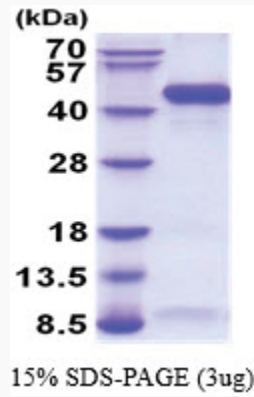
<b>Gene Name</b>	Wif1 Wnt inhibitory factor 1 [ Mus musculus (house mouse) ]
<b>Official Symbol</b>	Wif1
<b>Synonyms</b>	Wif1; Wnt inhibitory factor 1; WIF-; WIF-1; AW107799; wnt inhibitory factor 1
<b>Gene ID</b>	24117
<b>mRNA Refseq</b>	NM_011915
<b>Protein Refseq</b>	NP_036045
<b>UniProt ID</b>	Q9WUA1

 Tel: 1-631-559-9269 1-516-512-3133

 Email: [info@creative-biomart.com](mailto:info@creative-biomart.com)  Fax: 1-631-938-8127

 45-1 Ramsey Road, Shirley, NY 11967, USA

**SDS-PAGE**



 Tel: 1-631-559-9269 1-516-512-3133

 Email: [info@creative-biomart.com](mailto:info@creative-biomart.com)  Fax: 1-631-938-8127

 45-1 Ramsey Road, Shirley, NY 11967, USA