

Recombinant Mouse Wisp1 Protein, His-tagged

Cat. No. Wisp1-593H Lot. No. (See product label)

SPECIFICATION

Product Overview Recombinant Mouse Wisp1(Tyr213~Asn350) fused with His tag at N-terminal was expressed in E. coli.

Species Mouse

Source E.coli

ProteinLength Tyr213~Asn350

Form PBS, pH7.4, containing 0.01% SKL, 1mM DTT, 5% Trehalose and Proclin300.

Molecular Mass 17.0kDa

Endotoxin <1.0EU per 1g (determined by the LAL method)

Purity > 98%

Applications Positive Control; Immunogen; SDS-PAGE; WB.
If bio-activity of the protein is needed, please check active protein.

Stability The thermal stability is described by the loss rate. The loss rate was determined by accelerated thermal degradation test, that is, incubate the protein at 37 centigrade for 48h, and no obvious degradation and precipitation were observed. The loss rate is less than 5% within the expiration date under appropriate storage condition.

 Tel: 1-631-559-9269 1-516-512-3133

 Email: info@creative-biomart.com  Fax: 1-631-938-8127

 45-1 Ramsey Road, Shirley, NY 11967, USA

Storage	Avoid repeated freeze/thaw cycles. Store at 2-8 centigrade for one month. Aliquot and store at -80 centigrade for 12 months.
----------------	--

Reconstitution	Reconstitute in PBS or others.
-----------------------	--------------------------------

GENE INFORMATION

Gene Name	Wisp1 WNT1 inducible signaling pathway protein 1 [Mus musculus]
------------------	---

Official Symbol	Wisp1
------------------------	-------

Synonyms	WISP1; WNT1 inducible signaling pathway protein 1; WNT1-inducible-signaling pathway protein 1; ELM-1; WISP-1; CCN family member 4; CCN4; Elm1; AW146261;
-----------------	--

Gene ID	22402
----------------	-------

mRNA Refseq	NM_018865
--------------------	-----------

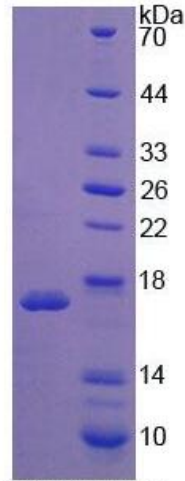
Protein Refseq	NP_061353
-----------------------	-----------

UniProt ID	O54775
-------------------	--------

 Tel: 1-631-559-9269 1-516-512-3133

 Email: info@creative-biomart.com  Fax: 1-631-938-8127

 45-1 Ramsey Road, Shirley, NY 11967, USA



15% SDS-PAGE

Tel: 1-631-559-9269 1-516-512-3133

Email: info@creative-biomart.com Fax: 1-631-938-8127

45-1 Ramsey Road, Shirley, NY 11967, USA