

Recombinant Mouse Wisp2 Protein, His-tagged

Cat. No. Wisp2-580M **Lot. No.** (See product label)

SPECIFICATION

Product Overview	Recombinant Mouse Wisp2 Protein (Gln24-Phe251) with N-His tag was expressed in E. coli.
Species	Mouse
Source	E.coli
ProteinLength	Gln24-Phe251
Description	Predicted to enable growth factor activity; heparin binding activity; and integrin binding activity. Acts upstream of or within regulation of cell growth. Located in extracellular space; nucleus; and plasma membrane. Is expressed in several structures, including early conceptus; embryo endoderm; embryo mesoderm; gut; and reproductive system. Orthologous to human CCN5 (cellular communication network factor 5).
Form	Freeze-dried powder
Molecular Mass	Predicted Molecular Mass: 28.2 kDa Accurate Molecular Mass: 30 kDa
Purity	> 90%
Applications	Positive Control; Immunogen; SDS-PAGE; WB.

 Tel: 1-631-559-9269 1-516-512-3133

 Email: info@creative-biomart.com  Fax: 1-631-938-8127

 45-1 Ramsey Road, Shirley, NY 11967, USA

Stability	The thermal stability is described by the loss rate. The loss rate was determined by accelerated thermal degradation test, that is, incubate the protein at 37 centigrade for 48h, and no obvious degradation and precipitation were observed. The loss rate is less than 5% within the expiration date under appropriate storage condition.
Storage	Avoid repeated freeze/thaw cycles. Store at 2-8 centigrade for one month. Aliquot and store at -80 centigrade for 12 months.
Storage Buffer	PBS, pH7.4, containing 0.01% SKL, 1 mM DTT, 5% Trehalose and Proclin300.
Reconstitution	Reconstitute in sterile water to a concentration of 0.1-1.0 mg/mL. Do not vortex.

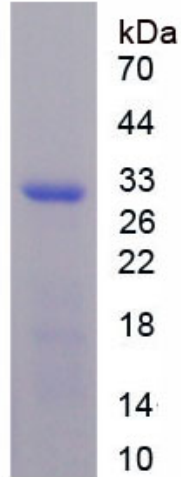
GENE INFORMATION

Gene Name	Wisp2 WNT1 inducible signaling pathway protein 2 [Mus musculus (house mouse)]
Official Symbol	Wisp2
Synonyms	WISP2; WNT1 inducible signaling pathway protein 2; WNT1-inducible-signaling pathway protein 2; CTGF-L; WISP-2; CCN family member 5; connective tissue growth factor-like protein; Ccn5; Crgr4; Ctgfl; Rcop1
Gene ID	22403
mRNA Refseq	NM_016873
Protein Refseq	NP_058569
UniProt ID	Q9Z0G4

 Tel: 1-631-559-9269 1-516-512-3133

 Email: info@creative-biomart.com  Fax: 1-631-938-8127

 45-1 Ramsey Road, Shirley, NY 11967, USA



Tel: 1-631-559-9269 1-516-512-3133

Email: info@creative-biomart.com Fax: 1-631-938-8127

45-1 Ramsey Road, Shirley, NY 11967, USA