

## Recombinant Mouse Wwc1 protein, His-tagged

**Cat. No.** Wwc1-1894M    **Lot. No.** (See product label)

### SPECIFICATION

<b>Product Overview</b>	Recombinant Mouse Wwc1 aa. (Glu847~Met1094) fused with N-terminal His tag was produced in E. coli cells.
<b>Species</b>	Mouse
<b>Source</b>	E.coli
<b>ProteinLength</b>	Glu847~Met1094
<b>Form</b>	Freeze-dried powder
<b>Molecular Mass</b>	40kDa as determined by SDS-PAGE reducing conditions.
<b>Endotoxin</b>	<1.0EU per 1ug (determined by the LAL method)
<b>Purity</b>	>98%
<b>Applications</b>	Positive Control; Immunogen; SDS-PAGE; WB.
<b>Stability</b>	The thermal stability is described by the loss rate. The loss rate was determined by accelerated thermal degradation test, that is, incubate the protein at 37°C for 48h, and no obvious degradation and precipitation were observed. The loss rate is less than 5% within the expiration date under appropriate storage condition.
<b>Storage</b>	Avoid repeated freeze/thaw cycles. Store at 2-8°C for one month. Aliquot and store at

 Tel: 1-631-559-9269    1-516-512-3133

 Email: [info@creative-biomart.com](mailto:info@creative-biomart.com)     Fax: 1-631-938-8127

 45-1 Ramsey Road, Shirley, NY 11967, USA

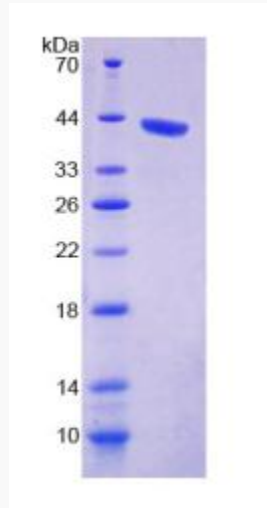
	-80°C for 12 months.
<b>Concentration</b>	200µg/mL
<b>Storage buffer</b>	100mM NaHCO <sub>3</sub> , 500mM NaCl, pH8.3, containing 1mM EDTA, 1mM DTT, 0.01% sarcosyl, 5%Trehalose and Proclin300.
<b>Reconstitution</b>	Reconstitute in 100mM NaHCO <sub>3</sub> , 500mM NaCl (pH8.3) to a concentration of 0.1-1.0 mg/mL. Do not vortex.
<b>Isoelectric Point</b>	9
<b>GENE INFORMATION</b>	
<b>Gene Name</b>	<a href="#">Wwc1 WW, C2 and coiled-coil domain containing 1 [ Mus musculus (house mouse) ]</a>
<b>Official Symbol</b>	<a href="#">Wwc1</a>
<b>Synonyms</b>	Wwc1; WW, C2 and coiled-coil domain containing 1; Kibra; AA408228; AU017197; BC037006; mKIAA0869; protein KIBRA; WW domain-containing protein 1; kidney and brain protein; protein WWC1
<b>Gene ID</b>	<a href="#">211652</a>
<b>mRNA Refseq</b>	<a href="#">NM_170779.1</a>
<b>Protein Refseq</b>	<a href="#">NP_740749.1</a>
<b>UniProt ID</b>	<a href="#">Q5SXA9</a>

 Tel: 1-631-559-9269 1-516-512-3133

 Email: [info@creative-biomart.com](mailto:info@creative-biomart.com)  Fax: 1-631-938-8127

 45-1 Ramsey Road, Shirley, NY 11967, USA

**SDS-PAGE**



 Tel: 1-631-559-9269 1-516-512-3133

 Email: [info@creative-biomart.com](mailto:info@creative-biomart.com)  Fax: 1-631-938-8127

 45-1 Ramsey Road, Shirley, NY 11967, USA