

Recombinant Full Length Human XAGE2 Protein, C-Flag-tagged

Cat. No. XAGE2-1268HFL **Lot. No.** (See product label)

SPECIFICATION

Product Overview	Recombinant Full Length Human XAGE2 Protein, fused to Flag-tag at C-terminus, was expressed in Mammalian cells.
Species	Human
Source	Mammalian Cells
Description	This gene is a member of the XAGE subfamily, which belongs to the GAGE family. The GAGE genes are expressed in a variety of tumors and in some fetal and reproductive tissues. This gene is strongly expressed in normal testis, and in Ewing's sarcoma, rhabdomyosarcoma, a breast cancer and a germ cell tumor. The protein encoded by this gene shares a sequence similarity with other GAGE/PAGE proteins. Because of the expression pattern and the sequence similarity, this protein also belongs to a family of CT (cancer-testis) antigens.
Form	25 mM Tris HCl, pH 7.3, 100 mM glycine, 10% glycerol.
Molecular Mass	12.2 kDa
AA Sequence	MSWRGRSTYRPRPRRSLQPPELIGAMLEPTDEEPKEEKPPPTKSRNPTPDQKREDD QGAAEIQVPDLEADLQELCQTKTGDGCEGGTDVKGKILPKAEHFKMPEAGEGKSQV TRTRPLEQKLISEEDLAANDILDYKDDDDKV
Purity	> 80% as determined by SDS-PAGE and Coomassie blue staining.

 Tel: 1-631-559-9269 1-516-512-3133

 Email: info@creative-biomart.com  Fax: 1-631-938-8127

 45-1 Ramsey Road, Shirley, NY 11967, USA

Stability	Stable for 12 months from the date of receipt of the product under proper storage and handling conditions. Avoid repeated freeze-thaw cycles.
Storage	Store at -80 centigrade.
Concentration	>50 ug/mL as determined by microplate BCA method.
Preparation	Recombinant protein was captured through anti-DDK affinity column followed by conventional chromatography steps.
Full Length	Full L.

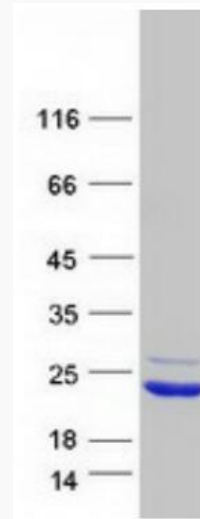
GENE INFORMATION

Gene Name	XAGE2 X antigen family member 2 [Homo sapiens (human)]
Official Symbol	XAGE2
Synonyms	CT12.2; GAGED3; XAGE-2; XAGE2B
Gene ID	9502
mRNA Refseq	NM_130777.3
Protein Refseq	NP_570133.1
MIM	300416
UniProt ID	Q96GT9

 Tel: 1-631-559-9269 1-516-512-3133

 Email: info@creative-biomart.com  Fax: 1-631-938-8127

 45-1 Ramsey Road, Shirley, NY 11967, USA



Coomassie blue staining of purified XAGE2 protein.

 Tel: 1-631-559-9269 1-516-512-3133

 Email: info@creative-biomart.com  Fax: 1-631-938-8127

 45-1 Ramsey Road, Shirley, NY 11967, USA