

Recombinant Human XAGE2 Protein, Myc/DDK-tagged, C13 and N15-labeled

Cat. No. XAGE2-1813H Lot. No. (See product label)

SPECIFICATION

Product Overview	XAGE2 MS Standard C13 and N15-labeled recombinant protein (NP_570133) with a C-terminal MYC/DDK tag, was expressed in HEK293 cells.
Species	Human
Source	HEK293
Description	This gene is a member of the XAGE subfamily, which belongs to the GAGE family. The GAGE genes are expressed in a variety of tumors and in some fetal and reproductive tissues. This gene is strongly expressed in normal testis, and in Ewing's sarcoma, rhabdomyosarcoma, a breast cancer and a germ cell tumor. The protein encoded by this gene shares a sequence similarity with other GAGE/PAGE proteins. Because of the expression pattern and the sequence similarity, this protein also belongs to a family of CT (cancer-testis) antigens.
Molecular Mass	12.4 kDa
AA Sequence	MSWRGRSTYRPRRRSLQPPELIGAMLEPTDEEPKEEKPPTKSRNPTPDQKREDD QGAAEIQVPDLEADLQELCQTKTGDGCEGGTDVKGKILPKAEHFKMPEAGEGKSQV TRTRPLEQKLISEEDLAANDILDYKDDDDKV
Purity	> 80% as determined by SDS-PAGE and Coomassie blue staining
Stability	Stable for 3 months from receipt of products under proper storage and handling

 Tel: 1-631-559-9269 1-516-512-3133

 Email: info@creative-biomart.com  Fax: 1-631-938-8127

 45-1 Ramsey Road, Shirley, NY 11967, USA

conditions.

Storage Store at -80 centigrade. Avoid repeated freeze-thaw cycles.

Concentration 50 µg/mL as determined by BCA

Storage Buffer 100 mM glycine, 25 mM Tris-HCl, pH 7.3.

GENE INFORMATION

Gene Name XAGE2 X antigen family member 2 [Homo sapiens (human)]

Official Symbol XAGE2

Synonyms XAGE2; X antigen family, member 2; G antigen, family D, 3, GAGED3; G antigen family D member 3; cancer/testis antigen family 12; member 2; CT12.2; XAGE 2; protein XAGE-2; G antigen, family D, 3; cancer/testis antigen 12.2; cancer/testis antigen family 12, member 2; GAGED3; XAGE-2; XAGE2B;

Gene ID 9502

mRNA Refseq NM_130777

Protein Refseq NP_570133

MIM 300416

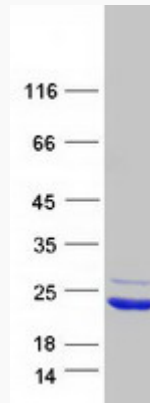
UniProt ID Q96GT9

 Tel: 1-631-559-9269 1-516-512-3133

 Email: info@creative-biomart.com  Fax: 1-631-938-8127

 45-1 Ramsey Road, Shirley, NY 11967, USA

SDS-PAGE



 Tel: 1-631-559-9269 1-516-512-3133

 Email: info@creative-biomart.com  Fax: 1-631-938-8127

 45-1 Ramsey Road, Shirley, NY 11967, USA