

Recombinant Human XAGE2B Protein, Myc/DDK-tagged, C13 and N15-labeled

Cat. No. XAGE2B-4841H **Lot. No.** (See product label)

SPECIFICATION

Product Overview	XAGE2B MS Standard C13 and N15-labeled recombinant protein (NP_001073006) with a C-terminal MYC/DDK tag, was expressed in HEK293 cells.
Species	Human
Source	HEK293
Description	This gene is a member of the XAGE subfamily, which belongs to the GAGE family. The GAGE genes are expressed in a variety of tumors and in some fetal and reproductive tissues. This gene is strongly expressed in normal testis, and in Ewing's sarcoma, rhabdomyosarcoma, a breast cancer and a germ cell tumor. The protein encoded by this gene shares a sequence similarity with other GAGE/PAGE proteins. Because of the expression pattern and the sequence similarity, this protein also belongs to a family of CT (cancer-testis) antigens.
Molecular Mass	12.4 kDa
AA Sequence	MSWRGRSTYRPRRRSLQPPELIGAMLEPTDEEPKEEKPPTKSRNPTPDQKREDD QGAAEIQVPDLEADLQELCQTKTGDGCEGGTDVKGKILPKAEHFKMPEAGEGKSQV TRTRPLEQKLISEEDLAANDILDYKDDDDKV
Purity	> 80% as determined by SDS-PAGE and Coomassie blue staining
Stability	Stable for 3 months from receipt of products under proper storage and handling

 Tel: 1-631-559-9269 1-516-512-3133

 Email: info@creative-biomart.com  Fax: 1-631-938-8127

 45-1 Ramsey Road, Shirley, NY 11967, USA

conditions.

Storage Store at -80 centigrade. Avoid repeated freeze-thaw cycles.

Concentration 50 µg/mL as determined by BCA

Storage Buffer 100 mM glycine, 25 mM Tris-HCl, pH 7.3.

GENE INFORMATION

Gene Name XAGE2B X antigen family, member 2B [Homo sapiens (human)]

Official Symbol XAGE2B

Synonyms XAGE2B; X antigen family, member 2B; XAGE-2; X antigen family, member 2B; CT12.2; X antigen family member 2; cancer/testis antigen 12.2; g antigen family D member 3

Gene ID 728242

mRNA Refseq NM_001079538

Protein Refseq NP_001073006

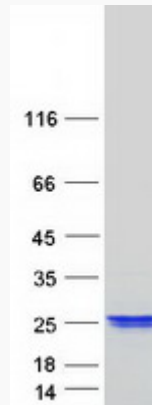
 Tel: 1-631-559-9269 1-516-512-3133

 Email: info@creative-biomart.com  Fax: 1-631-938-8127

 45-1 Ramsey Road, Shirley, NY 11967, USA



SDS-PAGE



Tel: 1-631-559-9269 1-516-512-3133

Email: info@creative-biomart.com Fax: 1-631-938-8127

45-1 Ramsey Road, Shirley, NY 11967, USA