

Recombinant Human XAGE3 Protein, Myc/DDK-tagged, C13 and N15-labeled

Cat. No. XAGE3-3833H **Lot. No.** (See product label)

SPECIFICATION

Product Overview

XAGE3 MS Standard C13 and N15-labeled recombinant protein (NP_573440) with a C-terminal MYC/DDK tag, was expressed in HEK293 cells.

Species

Human

Source

HEK293

Description

This gene is a member of the XAGE subfamily, which belongs to the GAGE family. The GAGE genes are expressed in a variety of tumors and in some fetal and reproductive tissues. This gene is expressed in placenta and fetal liver/spleen, and may function in inhibiting cancer cell growth. The protein encoded by this gene shares a sequence similarity with other GAGE/PAGE proteins. Because of the expression pattern and the sequence similarity, this protein also belongs to a family of CT (cancer-testis) antigens. Alternative splicing of this gene generates 2 transcript variants differing in the 5' UTR.

Molecular Mass

12.3 kDa

AA Sequence


MIWRGRSTYRPRRRSVPPPELIGPMLEPGDEEPQQEPPPTESRDPAPGQEREED
 QGAAETQVPDLEADLQELSQSKTGGEGCNGPDDQGKILPKSEQFKMPEGGDRQP
 QVTRTRPLEQKLISEEDLAANDILDYKDDDDKV

Purity

> 80% as determined by SDS-PAGE and Coomassie blue staining

 Tel: 1-631-559-9269 1-516-512-3133

 Email: info@creative-biomart.com  Fax: 1-631-938-8127

 45-1 Ramsey Road, Shirley, NY 11967, USA

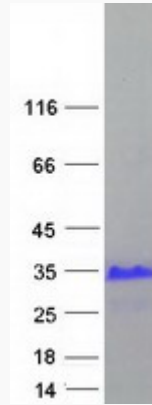
Stability	Stable for 3 months from receipt of products under proper storage and handling conditions.
Storage	Store at -80 centigrade. Avoid repeated freeze-thaw cycles.
Concentration	50 µg/mL as determined by BCA
Storage Buffer	100 mM glycine, 25 mM Tris-HCl, pH 7.3.
GENE INFORMATION	
Gene Name	XAGE3 X antigen family member 3 [Homo sapiens (human)]
Official Symbol	XAGE3
Synonyms	XAGE3; X antigen family member 3; PLAC6; GAGED4; XAGE-3; pp9012; CT12.3a; CT12.3b; X antigen family member 3; CT12.3; G antigen, family D, 4; cancer/testis antigen 12.3; cancer/testis antigen family 12, member 3a; cancer/testis antigen family 12, member 3b; g antigen family D member 4; placenta-specific 6; placenta-specific gene 6 protein; protein XAGE-3
Gene ID	170626
mRNA Refseq	NM_133179
Protein Refseq	NP_573440
MIM	300740
UniProt ID	Q8WTP9

 Tel: 1-631-559-9269 1-516-512-3133

 Email: info@creative-biomart.com  Fax: 1-631-938-8127

 45-1 Ramsey Road, Shirley, NY 11967, USA

SDS-PAGE



 Tel: 1-631-559-9269 1-516-512-3133

 Email: info@creative-biomart.com  Fax: 1-631-938-8127

 45-1 Ramsey Road, Shirley, NY 11967, USA