

Active Recombinant Human XCR1 Full Length Transmembrane protein(Nanodisc)

Cat. No. XCR1-0182H **Lot. No.** (See product label)

SPECIFICATION

Product Overview	Recombinant Human XCR1 Full Length Transmembrane protein(P46094), was expressed in HEK293.
Species	Human
Source	HEK293
Form	Lyophilized from nanodisc solubilization buffer (20 mM Tris-HCl, 150 mM NaCl, pH 8.0). Normally 5% – 8% trehalose is added as protectants before lyophilization. Please see Certificate of Analysis for specific instructions.
Bio-activity	Elisa plates were pre-coated with Flag Tag XCR1-Nanodisc (0.2µg/per well). Serial diluted anti-Flag monoclonal antibody solutions were added, washed, and incubated with secondary antibody before Elisa reading. From above data, the EC50 for anti-Flag monoclonal antibody binding with XCR1-Nanodisc is 2.130ng/ml.
Molecular Mass	The human full length XCR1 protein has a MW of 38.5 kDa.
Storage	Store at -20°C to -80°C for 12 months in lyophilized form. After reconstitution, if not intended for use within a month, aliquot and store at -80°C (Avoid repeated freezing and thawing). Lyophilized proteins are shipped at ambient temperature.
Reconstitution	It is recommended that sterile water be added to the vial to prepare a stock solution of 0.2 ug/ul. Centrifuge the vial at 4°C before opening to recover the entire contents.

 Tel: 1-631-559-9269 1-516-512-3133

 Email: info@creative-biomart.com  Fax: 1-631-938-8127

 45-1 Ramsey Road, Shirley, NY 11967, USA

Full Length Full L.

GENE INFORMATION

Gene Name XCR1 chemokine (C motif) receptor 1 [Homo sapiens]

Official Symbol XCR1

Synonyms XCR1; chemokine (C motif) receptor 1; CCXCR1, chemokine (C motif) XC receptor 1 , GPR5; chemokine XC receptor 1; lymphotactin receptor; XC chemokine receptor 1; G protein-coupled receptor 5; G-protein coupled receptor 5; chemokine (C motif) XC receptor 1; GPR5; CCXCR1;

Gene ID 2829

mRNA Refseq NM_001024644

Protein Refseq NP_001019815

MIM 600552

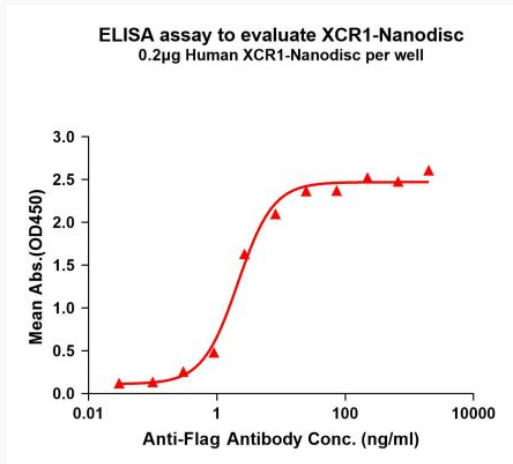
UniProt ID P46094

 Tel: 1-631-559-9269 1-516-512-3133

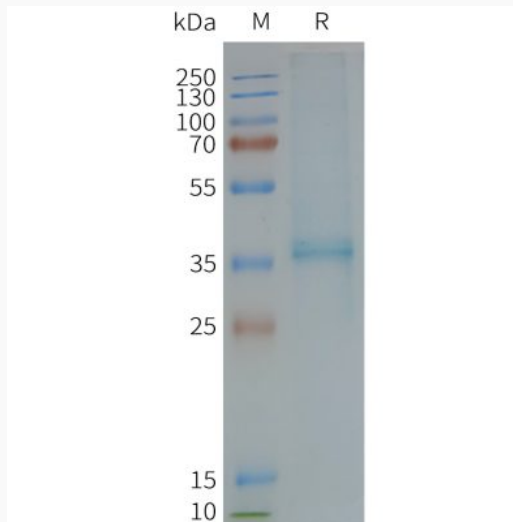
 Email: info@creative-biomart.com  Fax: 1-631-938-8127

 45-1 Ramsey Road, Shirley, NY 11967, USA

Activity



SDS-PAGE



 Tel: 1-631-559-9269 1-516-512-3133

 Email: info@creative-biomart.com  Fax: 1-631-938-8127

 45-1 Ramsey Road, Shirley, NY 11967, USA