

Recombinant Human XDH Protein, Myc/DDK-tagged, C13 and N15-labeled

Cat. No. XDH-4041H **Lot. No.** (See product label)

SPECIFICATION

Product Overview	XDH MS Standard C13 and N15-labeled recombinant protein (NP_000370) with a C-terminal MYC/DDK tag, was expressed in HEK293 cells.
Species	Human
Source	HEK293
Description	Xanthine dehydrogenase belongs to the group of molybdenum-containing hydroxylases involved in the oxidative metabolism of purines. The encoded protein has been identified as a moonlighting protein based on its ability to perform mechanistically distinct functions. Xanthine dehydrogenase can be converted to xanthine oxidase by reversible sulfhydryl oxidation or by irreversible proteolytic modification. Defects in xanthine dehydrogenase cause xanthinuria, may contribute to adult respiratory stress syndrome, and may potentiate influenza infection through an oxygen metabolite-dependent mechanism.
Molecular Mass	146.2 kDa
AA Sequence	MTADKLVFFVNGRKKVVEKNADPETLLAYLRRKLGSLGSKLGC GEGGCGACTVMLS KYDRLQNKIVHFSANACLAPICSLHHVAVTTVEGIGSTKTRLHPVQERIAKSHGSQCG FCTPGIVMSMYTLRNQPEPTMEEIENAFQGNLCRCTGYRPILQGFRTFARDGGCC GGDGNPNCCMNQKKDHSVLSLPSLFKPEEFTPLDPTQEPIFPPELLRLKDTPRKQ LRFEGERV TWIQASTLKELLDLKAQHPDAKL VVG NTEIGIEMKFKNMLFPMIVCPAWI

 Tel: 1-631-559-9269 1-516-512-3133

 Email: info@creative-biomart.com  Fax: 1-631-938-8127

 45-1 Ramsey Road, Shirley, NY 11967, USA

PELNSVEHGPDGISFGAACPLSIVEKTLVDAVAKLPAQKTEVFRGVLEQLRWFAGKQ
 VKSVASVGGNIITASPIDLNPVFMASGAKLTLVSRGTRRTVQMDHTFFPGYRKTLLS
 PEEILLSIEIPYSREGEYFSAFKQASREDDIAKVTSGMRVLFKPGTTEVQELALCYG
 GMANRTISALKTTQRQLSKLWKEELLQDVCAGLAEELHLPDAPGGMVDFRCTLTL
 SFFFKFYLTVLQKLGQENLEDKCGKLDPTFASATLLFQKDPADVQLFQEVPKGQSE
 EDMVGRPLPHLAADMQASGEAVYCDDIPRYENELSLRLVTSTRAHAKIKSIDTSEAK
 KVPGFVCFISADDVPGSNITGICNDETVFAKDKVTCVGHIIGAVVADTPEHTQRAAQG
 VKITYEELPAITIEDAIKNNSFYGPPELKIEKGDLLKGFSEADNVVSGEIIYIGGQEHFYLE
 THCTIAVPKGEAGEMELFVSTQNTMKTQSFVAKMLGVPANRIVRVKRMGGGFGG
 KETRSTVVSTAVALAAYKTGRPVRCLDRDEDMLITGGRHPFLARYKVGFMKTGTV
 VALEVDHFSNVGNTQDLSQSIMERALFHMDNCYKIPNIRGTGRLCKTNLPSNTAFRG
 FGGPQGMIAECWMSEVAVTCGMPAAEVRRNLYKEGDLTHFNQKLEGFTLPRCW
 EECLASSQYHARKSEVDKFNKENCWKKRGLCIPTKFGISFTVPFLNQAGALLHVYT
 DGSVLLTHGGTEMGQGLHTKMVQVASRALKIPTSKIYISETSTNTVPNTSPTAASVSA
 DLNGQAVYAAACQTILKRLEPYKKKNPSGSWEDWVTAAYMDTVSLSATGFYRTPNLG
 YSFETNSGNPFHYFSYGVACSEVEIDCLTGDHKNLRTDIVMDVGSLLNPAIDIGQVE
 GAFVQGLGLFTLEELHYSPEGLHTRGPSTYKIPAFGSIPIEFRVSLLRDCPNKKAIYA
 SKAVGEPPLFLAASIFFAIKDAIRAARAQHTGNNVKELFRLDSPATPEKIRNACVDKFT
 TLCVTGVPENCKPWSVRVTRTRPLEQKLISEEDLAANDILDYKDDDDKV

Purity > 80% as determined by SDS-PAGE and Coomassie blue staining

Stability Stable for 3 months from receipt of products under proper storage and handling conditions.

Storage Store at -80 centigrade. Avoid repeated freeze-thaw cycles.

Concentration 50 µg/mL as determined by BCA

Storage Buffer 100 mM glycine, 25 mM Tris-HCl, pH 7.3.

 Tel: 1-631-559-9269 1-516-512-3133

 Email: info@creative-biomart.com  Fax: 1-631-938-8127

 45-1 Ramsey Road, Shirley, NY 11967, USA

GENE INFORMATION

Gene Name XDH xanthine dehydrogenase [Homo sapiens (human)]

Official Symbol XDH

Synonyms XDH; xanthine dehydrogenase; xanthene dehydrogenase; xanthine dehydrogenase/oxidase; XO; XOR; xanthine oxidase; xanthine oxidoreductase;

Gene ID 7498

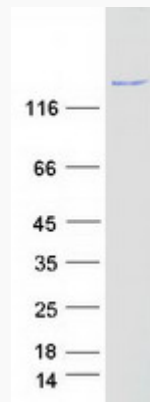
mRNA Refseq NM_000379

Protein Refseq NP_000370

MIM 607633

UniProt ID P47989

SDS-PAGE



 Tel: 1-631-559-9269 1-516-512-3133

 Email: info@creative-biomart.com  Fax: 1-631-938-8127

 45-1 Ramsey Road, Shirley, NY 11967, USA