

Recombinant Human XPA Protein, His&GST-tagged

Cat. No. XPA-594H Lot. No. (See product label)

SPECIFICATION

Product Overview	Recombinant Human XPA Protein (Ser23-Glu271) with N-His&GST tag was expressed in E. coli.
Species	Human
Source	E.coli
ProteinLength	Ser23-Glu271
Description	This gene encodes a zinc finger protein plays a central role in nucleotide excision repair (NER), a specialized type of DNA repair. NER is responsible for repair of UV radiation-induced photoproducts and DNA adducts induced by chemical carcinogens and chemotherapeutic drugs. The encoded protein interacts with DNA and several NER proteins, acting as a scaffold to assemble the NER incision complex at sites of DNA damage. Mutations in this gene cause Xeroderma pigmentosum complementation group A (XP-A), an autosomal recessive skin disorder featuring hypersensitivity to sunlight and increased risk for skin cancer.
Form	Freeze-dried powder
Molecular Mass	Predicted Molecular Mass: 59.6 kDa Accurate Molecular Mass: 60 kDa
Purity	> 90%

 Tel: 1-631-559-9269 1-516-512-3133

 Email: info@creative-biomart.com  Fax: 1-631-938-8127

 45-1 Ramsey Road, Shirley, NY 11967, USA

Applications	Positive Control; Immunogen; SDS-PAGE; WB.
Stability	The thermal stability is described by the loss rate. The loss rate was determined by accelerated thermal degradation test, that is, incubate the protein at 37 centigrade for 48h, and no obvious degradation and precipitation were observed. The loss rate is less than 5% within the expiration date under appropriate storage condition.
Storage	Avoid repeated freeze/thaw cycles. Store at 2-8 centigrade for one month. Aliquot and store at -80 centigrade for 12 months.
Storage Buffer	20mM Tris, 150mM NaCl, pH8.0, containing 1mM EDTA, 1mM DTT, 0.01% SKL, 5% Trehalose and Proclin300.
Reconstitution	Reconstitute in sterile water to a concentration of 0.1-1.0 mg/mL. Do not vortex.

GENE INFORMATION

Gene Name	XPA xeroderma pigmentosum, complementation group A [Homo sapiens (human)]
Official Symbol	XPA
Synonyms	XPA; xeroderma pigmentosum, complementation group A; DNA repair protein complementing XP-A cells; XP1; XPAC; excision repair-controlling; xeroderma pigmentosum group A-complementing protein
Gene ID	7507
mRNA Refseq	NM_000380
Protein Refseq	NP_000371

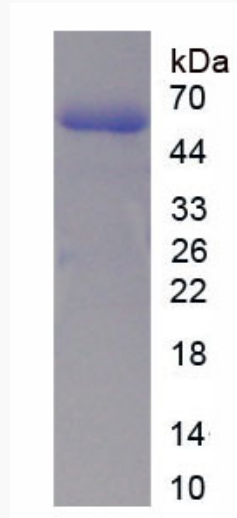
 Tel: 1-631-559-9269 1-516-512-3133

 Email: info@creative-biomart.com  Fax: 1-631-938-8127

 45-1 Ramsey Road, Shirley, NY 11967, USA

MIM 611153

UniProt ID P23025



 Tel: 1-631-559-9269 1-516-512-3133

 Email: info@creative-biomart.com  Fax: 1-631-938-8127

 45-1 Ramsey Road, Shirley, NY 11967, USA