

Recombinant Human XPNPEP1 Protein, Myc/DDK-tagged, C13 and N15-labeled

Cat. No. XPNPEP1-5522H **Lot. No.** (See product label)

SPECIFICATION

Product Overview

XPNPEP1 MS Standard C13 and N15-labeled recombinant protein (NP_065116) with a C-terminal MYC/DDK tag, was expressed in HEK293 cells.

Species

Human

Source

HEK293

Description

This gene encodes the cytosolic form of a metalloaminopeptidase that catalyzes the cleavage of the N-terminal amino acid adjacent to a proline residue. The gene product may play a role in degradation and maturation of tachykinins, neuropeptides, and peptide hormones. Alternative splicing results in multiple transcript variants.

Molecular Mass

69.9 kDa

AA Sequence

MPPKVTSELLRQLRQAMRNSEYVTEPIQAYIIPSGDAHQSEYIAPCDCRRAFVSGFD
 GSAGTAITEEHAAMWTDGRYFLQAAKQMDSNWTLMKMGLKDTPTQEDWLVSVLP
 EGSRVGVDPLIIPTDYWKKMAKVLRSAGHHLIPVKENLVDKIWTD RPERPCKPLLTG
 LDYTGISWKDKVADLRLKMAERNVMWFVVTALDEIAWLFNLRGSDVEHNPVFFSYAI
 IGLETIMLFIDGDRIDAPSVKEHLLLDLGLEAEYRIQVHPYKSILSELKALCADLSPREK
 VVWSDKASYAVSETIPKDHRCMPYTPICIAKAVKNSAESEGMRRRAHIKDAVALCEL
 FNWLEKEVPKGGVTEISAADKAEFFRRQQADFVDSLFPSTISSTGPNGAIHYPVPET
 NRTLSDLDEVYLIDSGAQYKDGTTDVRTMTMHFGTPTAYEKECFYVVLKGHIAVSAAVF
 PTGTKGHLLDSFARSALWDSGLDYLHGTGHGVGSFLNVHEGPCGISYKTFSDPELE

 Tel: 1-631-559-9269 1-516-512-3133

 Email: info@creative-biomart.com  Fax: 1-631-938-8127

 45-1 Ramsey Road, Shirley, NY 11967, USA

AGMIVTDEPGYYEDGAFGIRIENVVLVVPVKTKYNFNRRGSLTFEPLTLVPIQTKMIDV
 DSLTDKECDWLNNYHLTCRDVIGKELQKQGRQEALEWLIRETQPISKQHTRTRPLE
 QKLISEEDLAANDILDYKDDDDKV

Purity > 80% as determined by SDS-PAGE and Coomassie blue staining

Stability Stable for 3 months from receipt of products under proper storage and handling conditions.

Storage Store at -80 centigrade. Avoid repeated freeze-thaw cycles.

Concentration 50 µg/mL as determined by BCA

Storage Buffer 100 mM glycine, 25 mM Tris-HCl, pH 7.3.

GENE INFORMATION

Gene Name [XPNPEP1 X-prolyl aminopeptidase 1 \[Homo sapiens \(human\) \]](#)

Official Symbol [XPNPEP1](#)

Synonyms XPNPEP1; X-prolyl aminopeptidase (aminopeptidase P) 1, soluble; X prolyl aminopeptidase (aminopeptidase P) like, XPNPEP, XPNPEPL, XPNPEPL1; xaa-Pro aminopeptidase 1; X-Pro aminopeptidase 1; soluble aminopeptidase P; cytosolic aminopeptidase P; aminopeptidase P, cytosolic; aminoacylproline aminopeptidase; X-prolyl aminopeptidase 1, soluble; APP1; SAMP; XPNPEP; XPNPEPL; XPNPEPL1;

Gene ID [7511](#)

mRNA Refseq [NM_020383](#)

 Tel: 1-631-559-9269 1-516-512-3133

 Email: info@creative-biomart.com  Fax: 1-631-938-8127

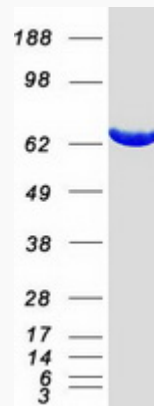
 45-1 Ramsey Road, Shirley, NY 11967, USA


Protein Refseq NP_065116

MIM 602443


UniProt ID Q9NQW7

SDS-PAGE



 Tel: 1-631-559-9269 1-516-512-3133

 Email: info@creative-biomart.com  Fax: 1-631-938-8127

 45-1 Ramsey Road, Shirley, NY 11967, USA