

Recombinant Human XPNPEP2 protein, His-tagged

Cat. No. XPNPEP2-1419H **Lot. No.** (See product label)

SPECIFICATION

Product Overview	Recombinant Human XPNPEP2 protein(O43895)(His22-Ala649), fused with C-terminal His tag, was expressed in HEK293.
Species	Human
Source	C-His
ProteinLength	His22-Ala649
Tag	C-His
Form	Supplied as 0.22µm filtered solution in PBS (pH 7.4).
Bio-activity	Measured by its ability to cleave the fluorogenic peptide substrate, H-Lys(2-Aminobenzoyl)-Pro-Pro-p-Nitroanilide (K(Abz)PP-pNA). The specific activity is > 300 pmol/min/µg.
Molecular Mass	The protein has a predicted MW of 71.83 kDa. Due to glycosylation, the protein migrates to 73-83 kDa based on Tris-Bis PAGE result.
Endotoxin	Less than 1EU per µg by the LAL method.
Purity	> 95% as determined by Tris-Bis PAGE; > 95% as determined by HPLC.
Storage	Valid for 12 months from date of receipt when stored at -80°C.;Recommend to aliquot

 Tel: 1-631-559-9269 1-516-512-3133

 Email: info@creative-biomart.com  Fax: 1-631-938-8127

 45-1 Ramsey Road, Shirley, NY 11967, USA

the protein into smaller quantities for optimal storage. Please do not repeated freeze-thaw cycles.

Reconstitution

It is recommended that sterile water be added to the vial to prepare a stock solution of 0.2 ug/ul. Centrifuge the vial at 4°C before opening to recover the entire contents.

GENE INFORMATION

Gene Name

XPNPEP2 X-prolyl aminopeptidase (aminopeptidase P) 2, membrane-bound [Homo sapiens]

Official Symbol

XPNPEP2

Synonyms

XPNPEP2; X-prolyl aminopeptidase (aminopeptidase P) 2, membrane-bound; xaa-Pro aminopeptidase 2; mAmP; membrane-bound APP; membrane-bound AmP; X-Pro aminopeptidase 2; aminoacylproline aminopeptidase; membrane-bound aminopeptidase P; APP2;

Gene ID

7512

mRNA Refseq

NM_003399

Protein Refseq

NP_003390

UniProt ID

O43895

 Tel: 1-631-559-9269 1-516-512-3133

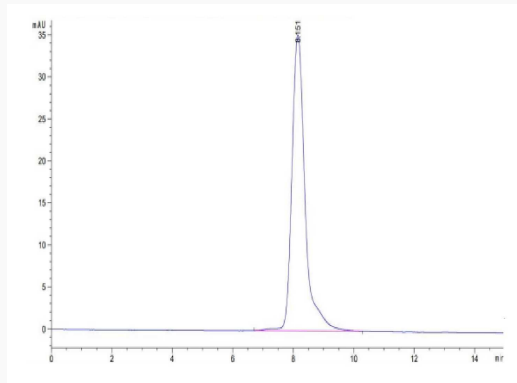
 Email: info@creative-biomart.com  Fax: 1-631-938-8127

 45-1 Ramsey Road, Shirley, NY 11967, USA

Tris-Bis PAGE



SEC-HPLC



 Tel: 1-631-559-9269 1-516-512-3133

 Email: info@creative-biomart.com  Fax: 1-631-938-8127

 45-1 Ramsey Road, Shirley, NY 11967, USA