

## Recombinant Mouse XPNPEP2 protein, His-tagged

Cat. No. XPNPEP2-1421M Lot. No. (See product label)

### SPECIFICATION

<b>Product Overview</b>	Recombinant Mouse XPNPEP2 protein(B1AVD1)(Pro23-Ala650), fused with C-terminal His tag, was expressed in HEK293.
<b>Species</b>	Mouse
<b>Source</b>	C-His
<b>ProteinLength</b>	Pro23-Ala650
<b>Tag</b>	C-His
<b>Form</b>	Supplied as 0.22µm filtered solution in PBS (pH 7.4).
<b>Bio-activity</b>	Measured by its ability to cleave the fluorogenic peptide substrate, H-Lys(2-Aminobenzoyl)-Pro-Pro-p-Nitroanilide (K(Abz)PP-pNA). The specific activity is > 175 pmol/min/µg.
<b>Molecular Mass</b>	The protein has a predicted MW of 72.24 kDa. Due to glycosylation, the protein migrates to 75-105 kDa based on Tris-Bis PAGE result.
<b>Endotoxin</b>	Less than 1EU per µg by the LAL method.
<b>Purity</b>	> 95% as determined by Tris-Bis PAGE; > 95% as determined by HPLC.
<b>Storage</b>	Valid for 12 months from date of receipt when stored at -80°C.;Recommend to aliquot

 Tel: 1-631-559-9269 1-516-512-3133

 Email: [info@creative-biomart.com](mailto:info@creative-biomart.com)  Fax: 1-631-938-8127

 45-1 Ramsey Road, Shirley, NY 11967, USA

the protein into smaller quantities for optimal storage. Please do not repeated freeze-thaw cycles.

**Reconstitution**

It is recommended that sterile water be added to the vial to prepare a stock solution of 0.2 ug/ul. Centrifuge the vial at 4°C before opening to recover the entire contents.

**GENE INFORMATION****Gene Name**

Xpnpep2 X-prolyl aminopeptidase (aminopeptidase P) 2, membrane-bound [ Mus musculus ]

**Official Symbol**

XPNPEP2

**Synonyms**

XPNPEP2; X-prolyl aminopeptidase (aminopeptidase P) 2, membrane-bound; membrane-bound aminopeptidase P; mAPP; 9030008G12Rik;

**Gene ID**

170745

**mRNA Refseq**

NM\_133213

**Protein Refseq**

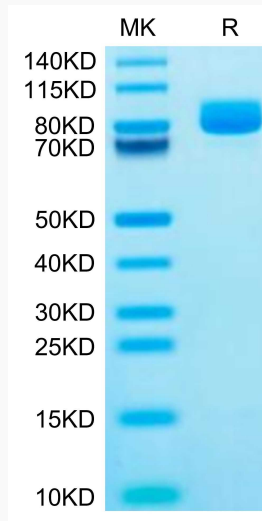
NP\_573476

 Tel: 1-631-559-9269 1-516-512-3133

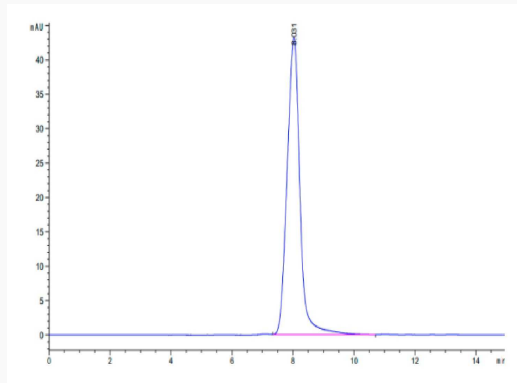
 Email: [info@creative-biomart.com](mailto:info@creative-biomart.com)  Fax: 1-631-938-8127

 45-1 Ramsey Road, Shirley, NY 11967, USA

**Tris-Bis PAGE**



**SEC-HPLC**



 Tel: 1-631-559-9269 1-516-512-3133

 Email: [info@creative-biomart.com](mailto:info@creative-biomart.com)  Fax: 1-631-938-8127

 45-1 Ramsey Road, Shirley, NY 11967, USA