

## Recombinant Rat XPNPEP2 protein, His-tagged

**Cat. No.** XPNPEP2-1534R    **Lot. No.** (See product label)

### SPECIFICATION

<b>Product Overview</b>	Recombinant Rat XPNPEP2 protein(Q99MA2)(Pro23-Ala650), fused with C-terminal His tag, was expressed in HEK293.
<b>Species</b>	Rat
<b>Source</b>	C-His
<b>ProteinLength</b>	Pro23-Ala650
<b>Tag</b>	C-His
<b>Form</b>	Lyophilized from 0.22µm filtered solution in PBS (pH 7.4). Normally 8% trehalose is added as protectant before lyophilization.
<b>Bio-activity</b>	Measured by its ability to cleave the fluorogenic peptide substrate, H-Lys(2-Aminobenzoyl)-Pro-Pro-p-Nitroanilide (K(Abz)PP-pNA). The specific activity is > 400 pmol/min/µg.
<b>Molecular Mass</b>	The protein has a predicted MW of 72.05 kDa. Due to glycosylation, the protein migrates to 75-85 kDa based on Tris-Bis PAGE result.
<b>Endotoxin</b>	Less than 1EU per µg by the LAL method.
<b>Purity</b>	> 95% as determined by Tris-Bis PAGE; > 95% as determined by HPLC.

 Tel: 1-631-559-9269    1-516-512-3133

 Email: [info@creative-biomart.com](mailto:info@creative-biomart.com)     Fax: 1-631-938-8127

 45-1 Ramsey Road, Shirley, NY 11967, USA

**Storage** Reconstituted protein stable at -80°C for 12 months, 4°C for 1 week. Use a manual defrost freezer and avoid repeated freeze-thaw cycles.

**Reconstitution** Centrifuge tubes before opening. Reconstituting to a concentration more than 100 µg/ml is recommended. Dissolve the lyophilized protein in distilled water.

## GENE INFORMATION

**Gene Name** [Xpnpep2](#) X-prolyl aminopeptidase (aminopeptidase P) 2, membrane-bound [ *Rattus norvegicus* ]

**Official Symbol** [XPNPEP2](#)

**Synonyms** [XPNPEP2](#); X-prolyl aminopeptidase (aminopeptidase P) 2, membrane-bound; xaa-Pro aminopeptidase 2;

**Gene ID** [117522](#)

**mRNA Refseq** [NM\\_057155](#)

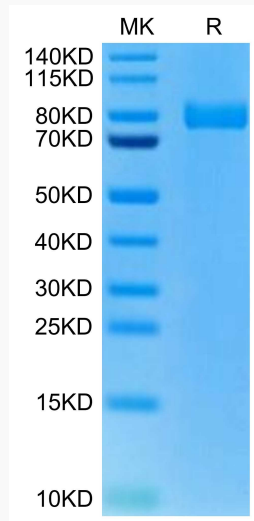
**Protein Refseq** [NP\\_476496](#)

 Tel: 1-631-559-9269 1-516-512-3133

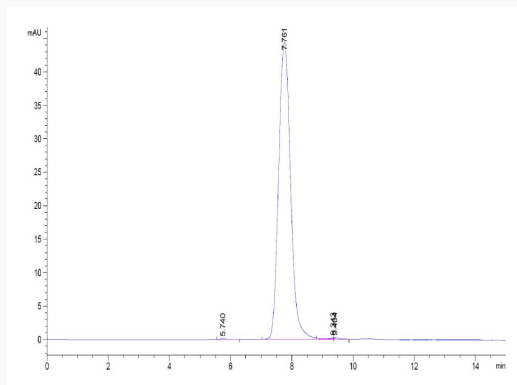
 Email: [info@creative-biomart.com](mailto:info@creative-biomart.com)  Fax: 1-631-938-8127

 45-1 Ramsey Road, Shirley, NY 11967, USA

**Tris-Bis PAGE**



**SEC-HPLC**



 Tel: 1-631-559-9269 1-516-512-3133

 Email: [info@creative-biomart.com](mailto:info@creative-biomart.com)  Fax: 1-631-938-8127

 45-1 Ramsey Road, Shirley, NY 11967, USA