

Recombinant Full Length Human XPNPEP2 Protein, C-Flag-tagged

Cat. No. XPNPEP2-1925HFL **Lot. No.** (See product label)

SPECIFICATION

| | |
|-------------------------|---|
| Product Overview | Recombinant Full Length Human XPNPEP2 Protein, fused to Flag-tag at C-terminus, was expressed in Mammalian cells. |
| Species | Human |
| Source | Mammalian Cells |
| Description | Aminopeptidase P is a hydrolase specific for N-terminal imido bonds, which are common to several collagen degradation products, neuropeptides, vasoactive peptides, and cytokines. Structurally, the enzyme is a member of the 'pita bread fold' family and occurs in mammalian tissues in both soluble and GPI-anchored membrane-bound forms. A membrane-bound and soluble form of this enzyme have been identified as products of two separate genes. |
| Form | 25 mM Tris HCl, pH 7.3, 100 mM glycine, 10% glycerol. |
| Molecular Mass | 75.4 kDa |
| AA Sequence | MARAHWGCCPWLVLLCACAWGHTKPVDLGGQDVRNCSTNPPYLPVTVVNTTMSL TALRQQMQTQNL SAYI IPGTDAH MNEYIGQHDERRAWITGFTGSAGTAVVTMKKAA VWTDSRYWTQAERQMDCNWELHKEVGTTPI VTWLLTEIPAGGRVGFDPFLLSIDT WESYDLALQGSNRQLVSITTNLVDLVWGSERPPVNPQPIYALQEA FTGSTWQEKVS GVR SQMQKHQKVPTAVLLSALEETAWL FNLRASDIPYNPFFYSYLLTDSSIRLFANK S RFSSETLSYLNSSCTGPMCVQIEDYSQVRDSIQAYSLGDVRIWIGTSYTMYG IYEM |

 Tel: 1-631-559-9269 1-516-512-3133

 Email: info@creative-biomart.com  Fax: 1-631-938-8127

 45-1 Ramsey Road, Shirley, NY 11967, USA

IPKEKLVTDITYSPV MMTKAVKNSKEQALLKASHVRDAVAVIRYLVWLEKNVPGTVD
 EFSGAEIVDKFRGEEQFSSGSPSFETIS ASGLNAALAHYSPTKELNRKLSSDEMYLLD
 SGGQYWDGTTDITRTVHWGTPSAFQKEAYTRVLIGNIDLS RLIFPAATSGRMVEAFA
 RRALWDAGLNYGHGTGHGIGNFLCVHEWPVGFQSNNIAMAKGMFTSIEPGYYK DG
 EFGIRLEDVALVVEAKTKYPGSYLTFEVVSFVPYDRNLIDVSLLSPEHLQYLNRYQTI
 REKVGPELQ RRQLLEEFEWLQQHTEPLAARAPDTASWASVLVVSTLAILGWSV TR
 TRPLEQKLISEEDLAANDILDYKDDDDKV

Purity > 80% as determined by SDS-PAGE and Coomassie blue staining.

Stability Stable for 12 months from the date of receipt of the product under proper storage and handling conditions. Avoid repeated freeze-thaw cycles.

Storage Store at -80 centigrade.

Concentration >50 ug/mL as determined by microplate BCA method.

Preparation Recombinant protein was captured through anti-DDK affinity column followed by conventional chromatography steps.

Protein Families Druggable Genome, Protease

Full Length Full L.

GENE INFORMATION

Gene Name [XPNPEP2 X-prolyl aminopeptidase 2 \[Homo sapiens \(human\) \]](#)

Official Symbol [XPNPEP2](#)

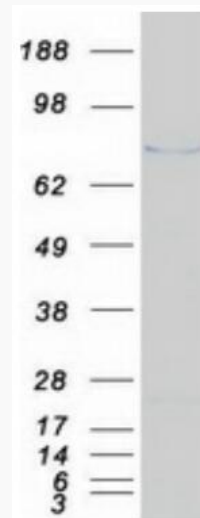
Synonyms APP2; AEACEI

 Tel: 1-631-559-9269 1-516-512-3133

 Email: info@creative-biomart.com  Fax: 1-631-938-8127

 45-1 Ramsey Road, Shirley, NY 11967, USA

| | |
|----------------|-------------|
| Gene ID | 7512 |
| mRNA Refseq | NM_003399.6 |
| Protein Refseq | NP_003390.4 |
| MIM | 300145 |
| UniProt ID | O43895 |



Coomassie blue staining of purified XPNPEP2 protein.

Tel: 1-631-559-9269 1-516-512-3133

Email: info@creative-biomart.com Fax: 1-631-938-8127

45-1 Ramsey Road, Shirley, NY 11967, USA