

## Recombinant Human XPO1 Protein, His-tagged

Cat. No. XPO1-460H Lot. No. (See product label)

### SPECIFICATION

<b>Product Overview</b>	Recombinant Human XPO1(Thr917~Asp1071) fused with His tag at N-terminal was expressed in E. coli.
<b>Species</b>	Human
<b>Source</b>	E.coli
<b>ProteinLength</b>	Thr917~Asp1071
<b>Description</b>	This cell-cycle-regulated gene encodes a protein that mediates leucine-rich nuclear export signal (NES)-dependent protein transport. The protein specifically inhibits the nuclear export of Rev and U snRNAs. It is involved in the control of several cellular processes by controlling the localization of cyclin B, MPAK, and MAPKAP kinase 2. This protein also regulates NFAT and AP-1.
<b>Form</b>	PBS, pH7.4, containing 0.01% SKL, 1mM DTT, 5% Trehalose and Proclin300.
<b>Molecular Mass</b>	21.4kDa
<b>Endotoxin</b>	<1.0EU per 1ug (determined by the LAL method)
<b>Purity</b>	> 95%
<b>Applications</b>	Positive Control; Immunogen; SDS-PAGE; WB. If bio-activity of the protein is needed, please check active protein

 Tel: 1-631-559-9269 1-516-512-3133

 Email: [info@creative-biomart.com](mailto:info@creative-biomart.com)  Fax: 1-631-938-8127

 45-1 Ramsey Road, Shirley, NY 11967, USA

**Stability** The thermal stability is described by the loss rate. The loss rate was determined by accelerated thermal degradation test, that is, incubate the protein at 37 centigrade for 48h, and no obvious degradation and precipitation were observed. The loss rate is less than 5% within the expiration date under appropriate storage condition.

**Storage** Avoid repeated freeze/thaw cycles. Store at 2-8 centigrade for one month. Aliquot and store at -80 centigrade for 12 months.

**Reconstitution** Reconstitute in PBS or others

## GENE INFORMATION

**Gene Name** XPO1 exportin 1 (CRM1 homolog, yeast) [ Homo sapiens ]

**Official Symbol** XPO1

**Synonyms** XPO1; exportin 1 (CRM1 homolog, yeast); exportin 1 (CRM1, yeast, homolog); exportin-1; CRM1; emb; CRM1, yeast, homolog; chromosome region maintenance 1 protein homolog; exportin-1 (required for chromosome region maintenance); exp1; DKFZp686B1823;

**Gene ID** 7514

**mRNA Refseq** NM\_003400

**Protein Refseq** NP\_003391

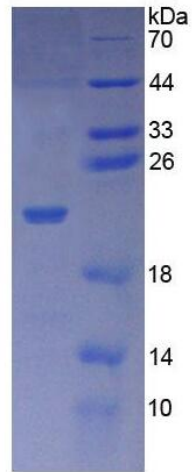
**MIM** 602559

**UniProt ID** O14980

 Tel: 1-631-559-9269 1-516-512-3133

 Email: [info@creative-biomart.com](mailto:info@creative-biomart.com)  Fax: 1-631-938-8127

 45-1 Ramsey Road, Shirley, NY 11967, USA



15% SDS-PAGE

Tel: 1-631-559-9269 1-516-512-3133

Email: [info@creative-biomart.com](mailto:info@creative-biomart.com) Fax: 1-631-938-8127

45-1 Ramsey Road, Shirley, NY 11967, USA