

Recombinant Human XPO4 protein, His & T7-tagged

Cat. No. XPO4-1712H Lot. No. (See product label)

SPECIFICATION

Product Overview	Recombinant Human XPO4 aa. (Ala881~Lys1151) fused with N-terminal His & T7 tag was produced in E. coli cells.
Species	Human
Source	E.coli
ProteinLength	Ala881~Lys1151
Description	XPO4 belongs to a large family of karyopherins (see MIM 602738) that mediate the transport of proteins and other cargo between the nuclear and cytoplasmic compartments (Lipowsky et al., 2000 [PubMed 10944119]).
Form	Freeze-dried powder
Molecular Mass	Predicted Molecular Mass: 34.3kDa
Endotoxin	<1.0EU per 1ug (determined by the LAL method)
Purity	>95%
Applications	SDS-PAGE; WB; ELISA; IP.
Stability	The thermal stability is described by the loss rate. The loss rate was determined by accelerated thermal degradation test, that is, incubate the protein at 37°C for 48h,

 Tel: 1-631-559-9269 1-516-512-3133

 Email: info@creative-biomart.com  Fax: 1-631-938-8127

 45-1 Ramsey Road, Shirley, NY 11967, USA

and no obvious degradation and precipitation were observed. The loss rate is less than 5% within the expiration date under appropriate storage condition.

Storage

Avoid repeated freeze/thaw cycles. Store at 2-8°C for one month. Aliquot and store at -80°C for 12 months.

Storage buffer

Supplied as lyophilized form in 20mM Tris, 150mM NaCl, pH8.0, containing 1mM EDTA, 1mM DTT, 0.01% sarcosyl, 5% trehalose, and preservative.

Reconstitution

Reconstitute in sterile ddH₂O.

Isoelectric Point

4.7

GENE INFORMATION

Gene Name

XPO4 exportin 4 [Homo sapiens (human)]

Official Symbol

XPO4

Synonyms

XPO4; exportin 4; exp4; exportin-4

Gene ID

64328

mRNA Refseq

NM_022459.4

Protein Refseq

NP_071904.4

UniProt ID

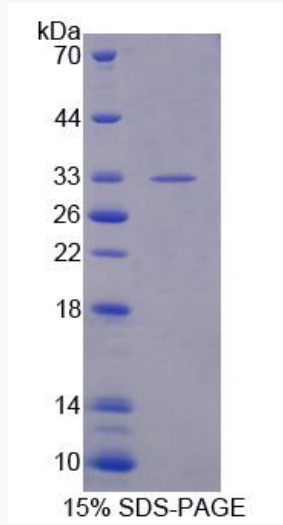
Q9C0E2

 Tel: 1-631-559-9269 1-516-512-3133

 Email: info@creative-biomart.com  Fax: 1-631-938-8127

 45-1 Ramsey Road, Shirley, NY 11967, USA

SDS-PAGE



 Tel: 1-631-559-9269 1-516-512-3133

 Email: info@creative-biomart.com  Fax: 1-631-938-8127

 45-1 Ramsey Road, Shirley, NY 11967, USA