

Recombinant Full Length Human XPO4 Protein, C-Flag-tagged

Cat. No. XPO4-1839HFL Lot. No. (See product label)

SPECIFICATION

Product Overview	Recombinant Full Length Human XPO4 Protein, fused to Flag-tag at C-terminus, was expressed in Mammalian cells.
Species	Human
Source	Mammalian Cells
Description	XPO4 belongs to a large family of karyopherins that mediate the transport of proteins and other cargo between the nuclear and cytoplasmic compartments.
Form	25 mM Tris HCl, pH 7.3, 100 mM glycine, 10% glycerol.
Molecular Mass	130 kDa
AA Sequence	<p>MMAAALGPPEVIAQLENAAKVLMAPPSMVNNEQRQHAEHIFLSFRKSKSPFAVCKHI LETSKVDYVLFQA ATAIMEAVVREWILLEKGSIESLRTFLLTYVLQRPNLQKYVREQIL LAVAVIVKRGSLDKSIDCKSIFHE VSQLISSGNPTVQTLACSILTALLSEFSSSSKTSNI GLSMEFHGNCKRVFQEEDLRQIFMLTVEVLQEFSS RRENLNAQMSSVFQRYLALAN QVLSWNFLPPNLGRHYIAMFESSQNVLLKPTESWRETLLEDSRVMEFFTVHRKIRE DSDMAQDSLQCLAQLASLHGPIFPDEGSQVDYLAHFIEGLLNTINGIEIEDSEAVGISS IISN LITVFPNRNVLTAIPSELFSSFVNCLTHLTCSFGRSAALEEVLDKDDMVYMEAYDK LLESWLTLVQDDKHF HKGFFTQHAVQVFNSYIQCHLAAPDGTRNLTANGVASREEE EISELQEDDRDQFSDQLASVGM LGRIAAE HCIPLLTSLLEERVTRLHGQLQRHQQQQL LASPGSSTVDNKMLDDLYEDIHWLILVTGYLLADDTQGETPL IPPEIMEYSIKHSSEV DINTTLQILGSPGEKASSIPGYNRTDSVIRLLSAILRVSEVESRAIRADLTHLL SPQMG</p>

 Tel: 1-631-559-9269 1-516-512-3133

 Email: info@creative-biomart.com  Fax: 1-631-938-8127

 45-1 Ramsey Road, Shirley, NY 11967, USA

KDIVWFLKRWAKTYLLVDEKLYDQISLPFSTAFGADTEGSQWIIIGYLLQKVISNLSVW
 SSEQDLA NDTVQLLVTLVERRERANLVIQCENWWNLAKQFASRSPPLNFLSSPVQR
 TLMKALVLGGFAHMDTETKQQ YWTEVLQPLQQRFLRVINQENFQQMCQQEEVKQ
 EITATLEALCGIAEATQIDNVAILFNFLMDFLTNCIG LMEVYKNTPETVNLIEVFVEVA
 HKQICYLGESKAMNLYEACL TLLQVYSKNNLGRQRIDVTAEEEQYQD LLLIMELLTNL
 LSKEFIDFSDTDEVFRGHEPGQAANRSVSAADVLYGVNLILPLMSQDLLKFPTLCN
 QY YKLITFICEIFPEKIPQLPEDLFKSLMYSLELGMTSMSSEVCQLCLEALTPLAEQCA
 KAQETDSPLFLAT RHFLKLVFDMLVLQKHNTMTTAAGEAFYTLVCLHQAEYSELVE
 TLLSSQQDPVIYQRLADAFNKLTASS TPPTLDRKQKMAFLKSLEEFMANVGGLLCVK
 TRTRPLEQKLISEEDLAANDILDYKDDDDKV

Purity	> 80% as determined by SDS-PAGE and Coomassie blue staining.
Stability	Stable for 12 months from the date of receipt of the product under proper storage and handling conditions. Avoid repeated freeze-thaw cycles.
Storage	Store at -80 centigrade.
Concentration	>50 ug/mL as determined by microplate BCA method.
Preparation	Recombinant protein was captured through anti-DDK affinity column followed by conventional chromatography steps.
Full Length	Full L.

GENE INFORMATION

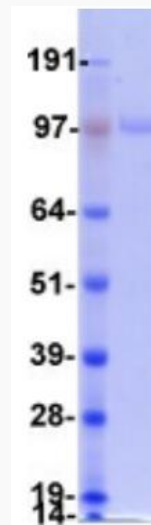
Gene Name	XPO4 exportin 4 [Homo sapiens (human)]
Official Symbol	XPO4

 Tel: 1-631-559-9269 1-516-512-3133


 Email: info@creative-biomart.com  Fax: 1-631-938-8127

 45-1 Ramsey Road, Shirley, NY 11967, USA

Synonyms	exp4
Gene ID	64328
mRNA Refseq	NM_022459.5
Protein Refseq	NP_071904.4
MIM	611449
UniProt ID	Q9C0E2



Coomassie blue staining of purified XPO4 protein.

 Tel: 1-631-559-9269 1-516-512-3133

 Email: info@creative-biomart.com  Fax: 1-631-938-8127

 45-1 Ramsey Road, Shirley, NY 11967, USA