

# Recombinant Human XRCC1 Protein, Myc/DDK-tagged, C13 and N15-labeled

**Cat. No.** XRCC1-4675H    **Lot. No.** (See product label)

## SPECIFICATION

<b>Product Overview</b>	XRCC1 MS Standard C13 and N15-labeled recombinant protein (NP_006288) with a C-terminal MYC/DDK tag, was expressed in HEK293 cells.
<b>Species</b>	Human
<b>Source</b>	HEK293
<b>Description</b>	The protein encoded by this gene is involved in the efficient repair of DNA single-strand breaks formed by exposure to ionizing radiation and alkylating agents. This protein interacts with DNA ligase III, polymerase beta and poly (ADP-ribose) polymerase to participate in the base excision repair pathway. It may play a role in DNA processing during meiosis and recombination in germ cells. A rare microsatellite polymorphism in this gene is associated with cancer in patients of varying radiosensitivity.
<b>Molecular Mass</b>	69.5 kDa
<b>AA Sequence</b>	MPEIRLRHVVSCSSQDSTHCAENLLKADTYRKWRAAKAGEKTISVVLQLEKEEQIHS VDIGNDGSAFVEVLVGSSAGGAGEQDYEVLLVTSSFMSPSESRSRGSNPNRVRMFG PDKLVRAAAEKRWDRVKIVCSQPYSKDSFPGLSFVRFHSPDPKDEAEAPSQKVTVT KLGQFRVKEEDESANSLRPGALFFSRINKTSPVTASDPAGPSYAAATLQASSAASSA SPVSRAIGSTSKPQESPKGKRKLDLNQEEKKTPSKPPAQLSPSVPKRKLPAAPTRTP ATAPVPARAQQGAVTGKPRGEGTEPRRPRAGPEELGKILQGVVVVLSGFQNPFRSEL

 Tel: 1-631-559-9269    1-516-512-3133

 Email: [info@creative-biomart.com](mailto:info@creative-biomart.com)     Fax: 1-631-938-8127

 45-1 Ramsey Road, Shirley, NY 11967, USA

RDKALELGAKYRPDWTRDSTHLICAFANTPKYSQVLGLGGRIVRKEWVLDCHRMRR  
 RLPSQRYLMAGPGSSSEEDEASHSGSGDEAPKLPQKQPQTKTPTQAAGPSSPQ  
 KPPTPEETKAASPVLQEDIDIEGVQSEGQDNGAEDSGDTEDELRRVAEQKEHRLPP  
 GQEENGEDPYAGSTDENTDSEEHQEPPDLPVPELPDFFQGGKHFPLYGEFPGDERR  
 KLIRYVTAFNGELEDYMSDRVQFVITAQEWDPSEFEEALMDNPSLAFVRPRWIYSCNE  
 KQKLLPHQLYGVVPQATRTRPLEQKLISEEDLAANDILDYKDDDDKV

**Purity** > 80% as determined by SDS-PAGE and Coomassie blue staining

**Stability** Stable for 3 months from receipt of products under proper storage and handling conditions.

**Storage** Store at -80 centigrade. Avoid repeated freeze-thaw cycles.

**Concentration** 50 µg/mL as determined by BCA

**Storage Buffer** 100 mM glycine, 25 mM Tris-HCl, pH 7.3.

## GENE INFORMATION

**Gene Name** XRCC1 X-ray repair complementing defective repair in Chinese hamster cells 1 [ Homo sapiens (human) ]

**Official Symbol** XRCC1

**Synonyms** XRCC1; X-ray repair complementing defective repair in Chinese hamster cells 1; RCC; DNA repair protein XRCC1; X-ray repair cross-complementing protein 1; X-ray-repair, complementing defective, repair in Chinese hamster;

**Gene ID** 7515

 Tel: 1-631-559-9269 1-516-512-3133

 Email: [info@creative-biomart.com](mailto:info@creative-biomart.com)  Fax: 1-631-938-8127

 45-1 Ramsey Road, Shirley, NY 11967, USA

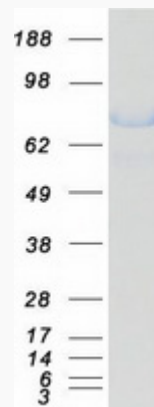
mRNA Refseq [NM\\_006297](#)

Protein Refseq [NP\\_006288](#)

MIM [194360](#)

UniProt ID [P18887](#)

SDS-PAGE



 Tel: 1-631-559-9269 1-516-512-3133

 Email: [info@creative-biomart.com](mailto:info@creative-biomart.com)  Fax: 1-631-938-8127

 45-1 Ramsey Road, Shirley, NY 11967, USA