

# Recombinant Human XRCC1 Protein (Thr284-Ala633), N-His tagged

Cat. No. XRCC1-6578H Lot. No. (See product label)

## SPECIFICATION

|                         |   |
|-------------------------|---|
| <b>Product Overview</b> | Recombinant human XRCC1 (Thr284-Ala633) fused with the N-His tag was expressed in E. coli.  |
| <b>Species</b>          | Human   |
| <b>Source</b>           | E.coli  |
| <b>ProteinLength</b>    | Thr284-Ala633   |
| <b>Form</b>             | Lyophilized powder/frozen liquid  |
| <b>Molecular Mass</b>   | 41.29 kDa   |
| <b>Purity</b>           | > 90 % as determined by SDS-PAGE  |
| <b>Notes</b>            | For research use only.  |
| <b>Storage</b>          | Use a manual defrost freezer and avoid repeated freeze thaw cycles. Store at 2 to 8 centigrade for one week. Store at -20 to -80 centigrade for twelve months from the date of receipt. |
| <b>Storage Buffer</b>   | 0.01M PBS, pH 7.4, 0.02 % NLS   |
| <b>Reconstitution</b>   | Reconstitute in sterile water for a stock solution.   |

 Tel: 1-631-559-9269 1-516-512-3133

 Email: [info@creative-biomart.com](mailto:info@creative-biomart.com)  Fax: 1-631-938-8127

 45-1 Ramsey Road, Shirley, NY 11967, USA

**Shipping** They are shipped out with dry ice/blue ice unless customers require otherwise.

## GENE INFORMATION

**Gene Name** XRCC1 X-ray repair complementing defective repair in Chinese hamster cells 1 [ Homo sapiens (human) ]

**Official Symbol** XRCC1

**Synonyms** XRCC1; X-ray repair complementing defective repair in Chinese hamster cells 1; RCC; DNA repair protein XRCC1; X-ray repair cross-complementing protein 1; X-ray-repair, complementing defective, repair in Chinese hamster;

**Gene ID** 7515

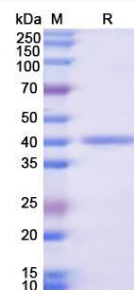
**mRNA Refseq** NM\_006297

**Protein Refseq** NP\_006288

**MIM** 194360

**UniProt ID** P18887

### SDS-PAGE



 Tel: 1-631-559-9269 1-516-512-3133

 Email: [info@creative-biomart.com](mailto:info@creative-biomart.com)  Fax: 1-631-938-8127

 45-1 Ramsey Road, Shirley, NY 11967, USA