

Recombinant Full Length Human XRCC1 Protein, C-Flag-tagged

Cat. No. XRCC1-778HFL **Lot. No.** (See product label)

SPECIFICATION

Product Overview	Recombinant Full Length Human XRCC1 Protein, fused to Flag-tag at C-terminus, was expressed in Mammalian cells.
Species	Human
Source	Mammalian Cells
Description	The protein encoded by this gene is involved in the efficient repair of DNA single-strand breaks formed by exposure to ionizing radiation and alkylating agents. This protein interacts with DNA ligase III, polymerase beta and poly (ADP-ribose) polymerase to participate in the base excision repair pathway. It may play a role in DNA processing during meiosis and recombination in germ cells. A rare microsatellite polymorphism in this gene is associated with cancer in patients of varying radiosensitivity.
Form	25 mM Tris HCl, pH 7.3, 100 mM glycine, 10% glycerol.
Molecular Mass	69.3 kDa
AA Sequence	MPEIRLRHVVSCSSQDSTHCAENLLKADTYRKWRAAKAGEKTISVVLQLEKEEQIHS VDIGNDGSAFVEV LVGSSAGGAGEQDYEVLLVTSSFMSPSESRSGSNPNRVRMFG PDKLVRAAAEKRWDRVKIVCSQPYSKDS PFGLSFVRFHSPDKDEAEAPSQKVTVT KLGQFRVKEEDESANSLRPGALFFSRINKTSPVTASDPAGPS YAAATLQASSAASS ASPVSRAIGSTSKPQESPCKGKRKLDLNQEEKKTSPKPPAQLSPSPVPRPKLPAPTR

 Tel: 1-631-559-9269 1-516-512-3133

 Email: info@creative-biomart.com  Fax: 1-631-938-8127

 45-1 Ramsey Road, Shirley, NY 11967, USA

TPATAPVPARAQQGAVTGKPRGEGTEPRRPRAGPEELGKILQGVVVVLSGFQNPFRS
 ELRDKALELGAKYR PDWTRDSTHLICAFANTPKYSQVLGLGGRIVRKEWVLDCHRM
 RRRLLPSQRYLMAGPGSSSEEDEASHSGG SGDEAPKLPQKQPQTCTKPTQAAGPS
 SPQKPPTPEETKAASPVLQEDIDIEGVQSEGQDNGAEDSGDTE ELRRVAEQKEH
 RLPPGQEENGEDPYAGSTDENTDSEEHQEPDLPVPELPDFFQGKHFFLYGEFPG
 DERR KLIRYVTFANGELEDYMSDRVQFVITAQEWDPSEFEALMDNPSLAFVPRRWI
 YSCNEKQKLLPHQLYGVV
 PQATRTRPLEQKLISEEDLAANDILDYKDDDDKV

Purity	> 80% as determined by SDS-PAGE and Coomassie blue staining.
Stability	Stable for 12 months from the date of receipt of the product under proper storage and handling conditions. Avoid repeated freeze-thaw cycles.
Storage	Store at -80 centigrade.
Concentration	>50 ug/mL as determined by microplate BCA method.
Preparation	Recombinant protein was captured through anti-DDK affinity column followed by conventional chromatography steps.
Protein Families	Druggable Genome
Protein Pathways	Base excision repair
Full Length	Full L.

GENE INFORMATION

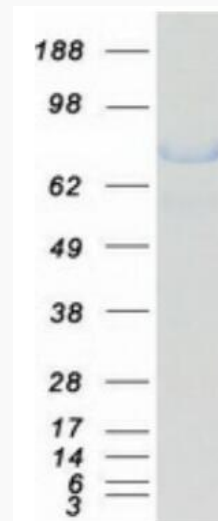
Gene Name [XRCC1 X-ray repair cross complementing 1 \[Homo sapiens \(human\) \]](#)

 Tel: 1-631-559-9269 1-516-512-3133

 Email: info@creative-biomart.com  Fax: 1-631-938-8127

 45-1 Ramsey Road, Shirley, NY 11967, USA

Official Symbol	XRCC1
Synonyms	RCC; SCAR26
Gene ID	7515
mRNA Refseq	NM_006297.3
Protein Refseq	NP_006288.2
MIM	194360
UniProt ID	P18887



Coomassie blue staining of purified XRCC1 protein.

 Tel: 1-631-559-9269 1-516-512-3133

 Email: info@creative-biomart.com  Fax: 1-631-938-8127

 45-1 Ramsey Road, Shirley, NY 11967, USA